

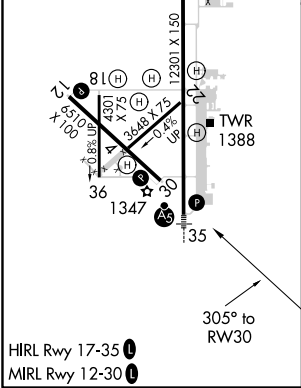
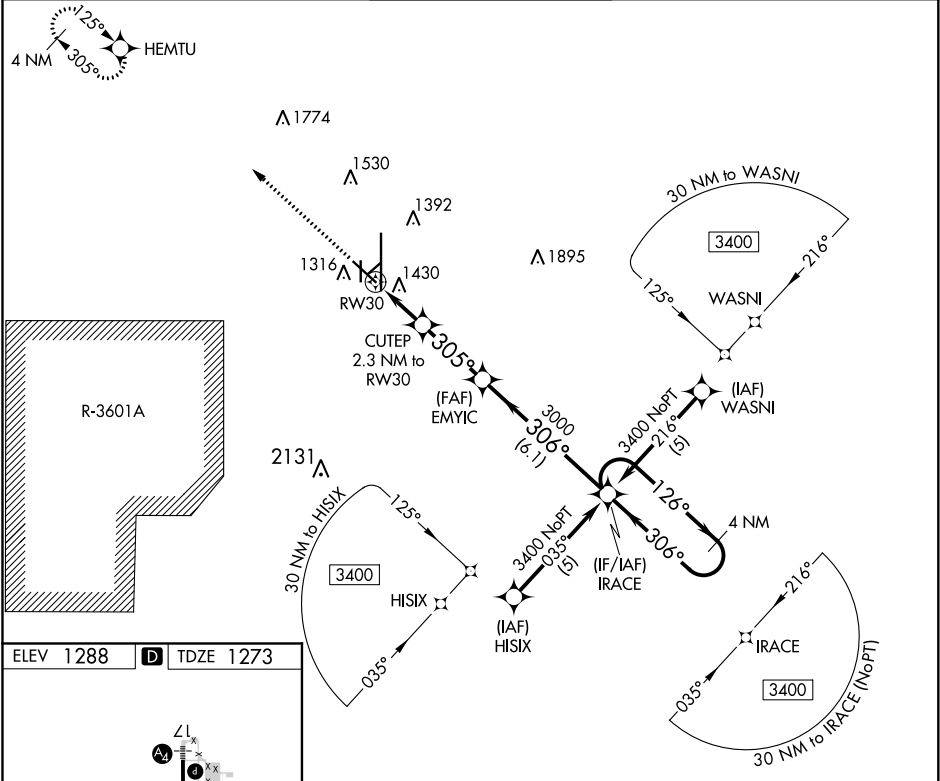
APP CRS 305°	Rwy Idg TDZE Apt Elev	6510 1273 1288
------------------------	-----------------------------	---

RNAV (GPS) RWY 30

SALINA RGNL (SLN)

<div><div>⚠</div><div>⚠</div></div> <div>Circling NA for Cat D southwest of runway 12-30. DME/DME RNP-0.3 NA. When local altimeter setting not received, use McPherson altimeter setting and increase all MDA 100 feet and LNAV Cat C/D and Circling Cat C visibility ¼ mile. VDP NA when using McPherson altimeter setting.</div>	MISSED APPROACH: Climb to 3400 direct HEMTU and hold.
--	--

ATIS 120.15	KANSAS CITY CENTER 134.9 363.2	SALINA TOWER ★ 119.3 (CTAF) 0 257.7	GND CON 121.9 397.9	UNICOM 122.95
-----------------------	--	---	-------------------------------	-------------------------



<p>3400 HEMTU</p> <p>IRACE 4 NM Holding Pattern</p> <p>CUTEP 2.3 NM to RW30</p> <p>EMYIC 3000</p> <p>126° 3400</p> <p>306°</p> <p>306°</p> <p>305°</p> <p>306°</p> <p>3.04° TCH 45</p> <p>1.1 NM to RW30</p> <p>1.2 NM</p> <p>2.9 NM</p> <p>6.1 NM</p> <p>1.1 NM</p> <p>2040</p> <p>RW30</p>					
CATEGORY	A		B	C	D
LNAV MDA	1680-1 407 (400-1)		1680-1¼ 407 (400-1¼)		
CIRCLING	1820-1 532 (600-1)		1840-1½ 552 (600-1½)	1840-2 552 (600-2)	

NC-2, 31 DEC 2020 to 28 JAN 2021

NC-2, 31 DEC 2020 to 28 JAN 2021