

VORTAC SLN	APP CRS	Rwy Idg	12300
117.1	183°	TDZE	1246
Chan 118		Apt Elev	1288

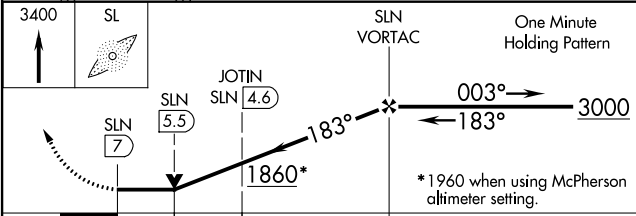
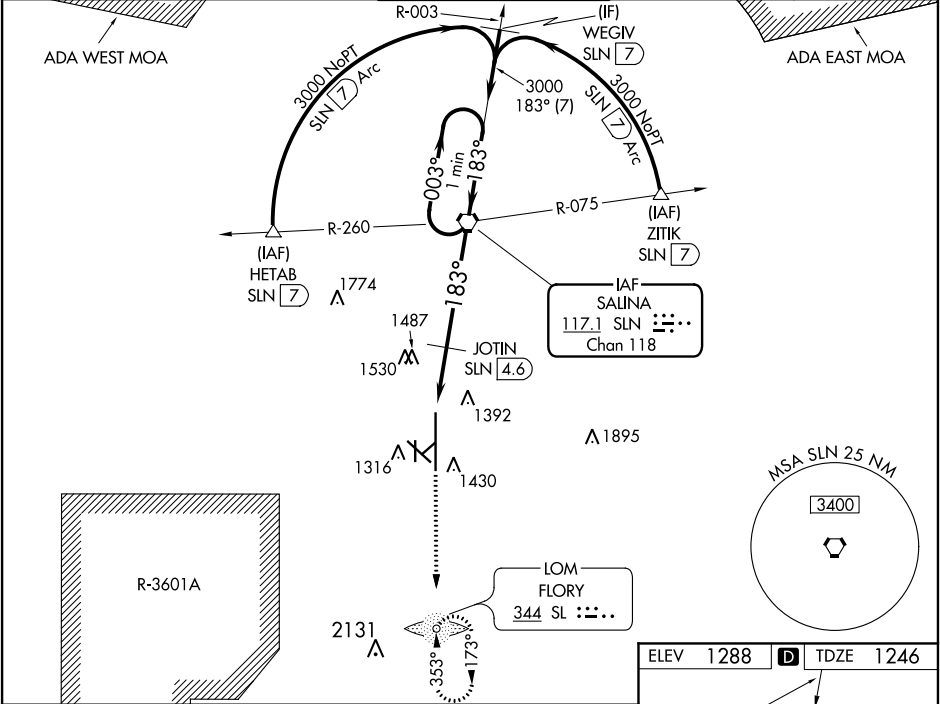
VOR RWY 17  
SALINA RGNL (SLN)

**⚠** Inoperative table does not apply to Cat C/D/E. Circling NA for Cat D/E southwest of Rwy 12-30. ADF required. When local altimeter setting not received, use McPherson altimeter setting and increase all MDA 100 feet and Cat C/D/E visibility ¼ mile and increase JOTIN fix minimums S-17 Cat C/D visibility ½ mile, Cat E visibility ½ mile, Circling Cat C/E visibility ¼ mile. VDP NA when using McPherson altimeter setting.

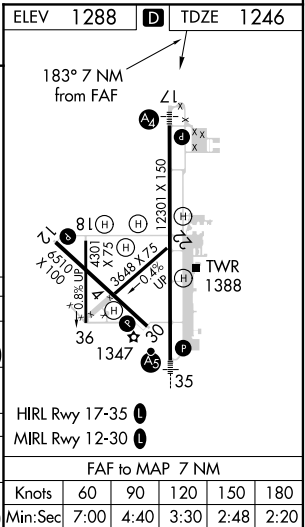
MALS

MISSED APPROACH: Climb to 3400 direct SL LOM and hold.

ATIS	KANSAS CITY CENTER	SALINA TOWER *	GND CON	UNICOM
120.15	134.9 363.2	119.3 (CTAF) 0 257.7	121.9 397.9	122.95



CATEGORY	A	B	C	D	E
S-17	1860-¾ 614 (600-¾)		1860-1¾ 614 (600-1¾)	1860-2 614 (600-2)	1860-2¼ 614 (600-2¼)
CIRCLING	1860-1 572 (600-1)		1860-1¾ 572 (600-1¾)	1860-2 572 (600-2)	1920-2¼ 632 (700-2¼)
JOTIN FIX MINIMUMS					
S-17	1760-¾ 514 (500-¾)		1760-1½ 514 (500-1½)	1760-1¾ 514 (500-1¾)	
CIRCLING	1820-1 532 (600-1)		1840-1½ 552 (600-1½)	1840-2 552 (600-2)	1920-2¼ 632 (700-2¼)



NC-2, 31 DEC 2020 to 28 JAN 2021

NC-2, 31 DEC 2020 to 28 JAN 2021