

LOC/DME I-BFF
109.3
Chan **30**

APP CRS
306°

Rwy Idg
TDZE
Apt Elev
8279
3952
3967

ILS or LOC RWY 30

WESTERN NEBRASKA RGNL/WILLIAM B HEILIG FIELD (BTF)

▼

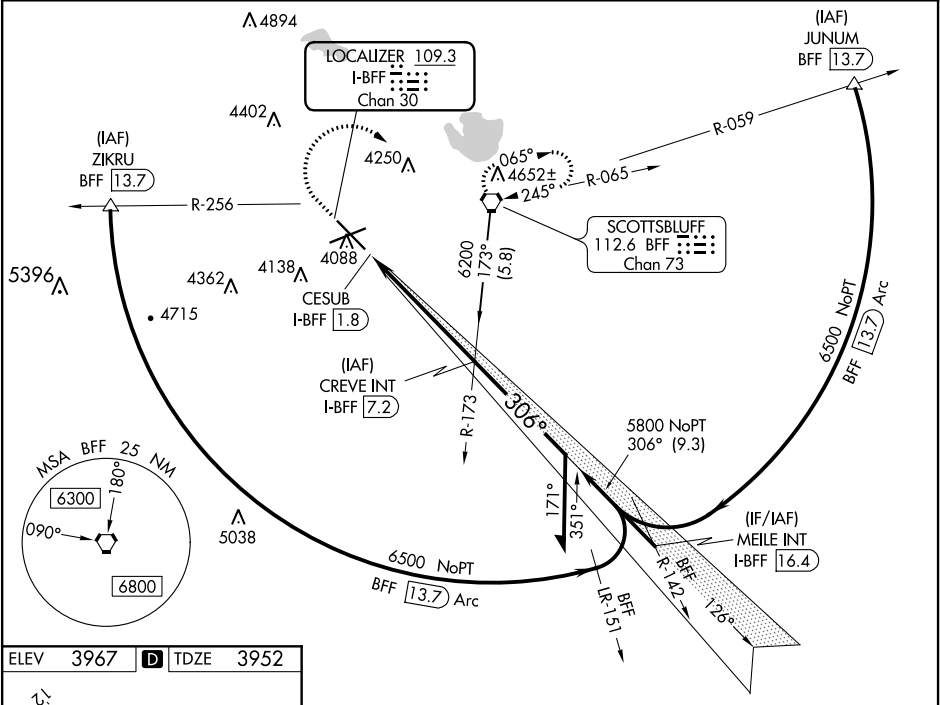
▲

For inop ALS, increase S-LOC 30 Cats C and D visibility to 1 SM.

MALSR

MISSED APPROACH: Climb to 5800 then climbing right turn to 6200 direct BFF VORTAC and hold.

ASOS 121.025	DENVER CENTER 127.95 338.2	UNICOM 123.0 (CTAF) 0
------------------------	--------------------------------------	---------------------------------



ELEV **3967** **D** TDZE **3952**

HIRL Rwy 12-30
MRL Rwy 5-23

FAF to MAP 5.4 NM

Knots	60	90	120	150	180
Min:Sec	5:24	3:36	2:42	2:10	1:48

5800 6200 BFF

CREVE INT I-BFF **7.2**

Remain within 10 NM

* LOC only

* I-BFF **2.5**

CESUB I-BFF **1.8**

0.3 0.7 4.7 NM

CATEGORY A B C D

S-ILS 30 4152-½ 200 (200-½)

S-LOC 30 4300-½ 348 (400-½) 4300-⅝ 348 (400-⅝)

CIRCLING 4500-1 533 (600-1) 4560-1½ 593 (600-1½) 4740-2½ 773 (800-2½)