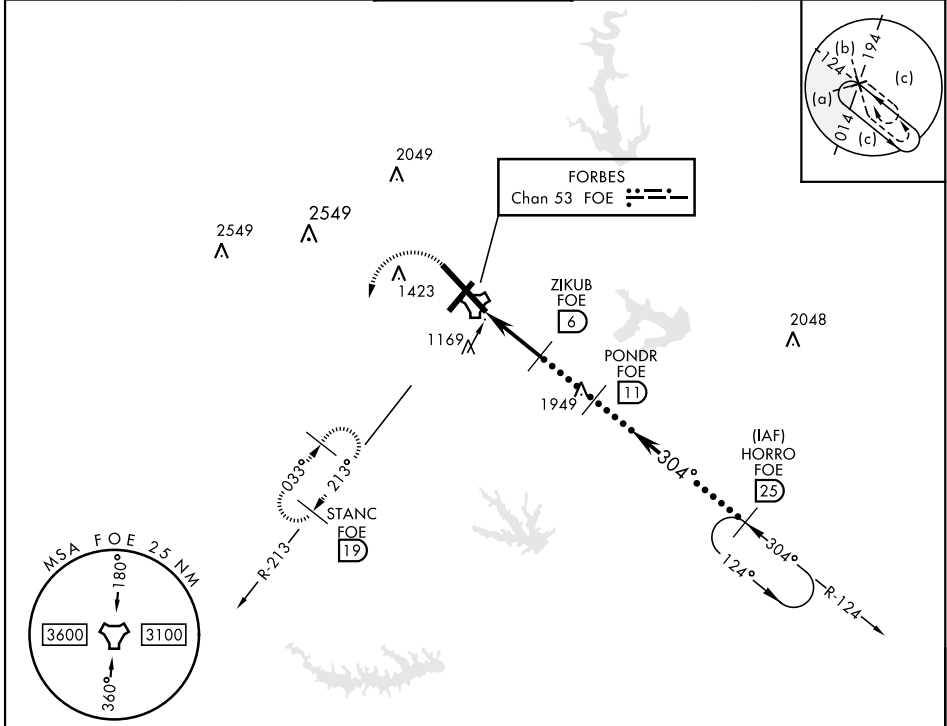


HI-TACAN RWY 31

TACAN Chan 53	APCH CRS 304°	Rwy Idg 12,803 TDZE 1037 Arpt Elev 1078	JAL-424 [USAF]	TOPEKA RGNL (KFOE)
* For ALS inop, increase CAT CDE vis to 1 3/4.			MALSRL A5	MISSED APPROACH: Climbing left turn to 3000 via heading 190° and FOE TACAN R-213 to STANC/19 DME and hold.
ATIS 128.25	KANSAS CITY CENTER 123.8 343.7	FORBES TOWER ★ 120.8 (CTAF) 340.2	GND CON 118.425 275.8	UNICOM 122.95



EMERG SAFE ALT 100 NM 3600

<div> <div>3000 FOE R-213</div> <div>STANC FOE 19</div> </div>		<div> <div>POND R 11</div> <div>3000</div> <div>2.90° TCH 58</div> </div>		<div> <div>HORRO R-124 25</div> <div>FL 250 10,000</div> </div>		
<div> <div>TACAN</div> <div>BUMKE 8</div> <div>2.1</div> <div>ZIKUB 6</div> <div>2700</div> <div>5.2 NM</div> </div>						
CATEGORY	C	D	E			
S-31 *	1520/50 483 (500-1)					
CIRCLING	1580-1½ 502 (600-1½)	1700-2 622 (700-2)	1720-2¼ 642 (700-2¼)			

HI-TACAN RWY 31