

WICHITA, KANSAS

ILS or LOC RWY 1L

WICHITA, KANSAS


| LOC I-AB | APCH CRS | | 1L | 1R |
|----------|----------|-----------|--------|--------|
| 111.1 | 008° | | | |
| | | Rwy Idg | 12,000 | 12,007 |
| | | TDZE | 1347 | 1347 |
| | | Arpt Elev | 1372 | |


ILS or LOC RWY 1L

AL-453 (USAF)

MC CONNELL AFB (KIAB)

| Rwy 1L | Rwy 1R |
|--------|--------|
| ALSF-1 | SSALR |





*** When ALS inop, increase RVR to 40 and vis to 3/4 mile.**

**** When ALS inop, increase RVR to 55 and vis to 1 mile.**

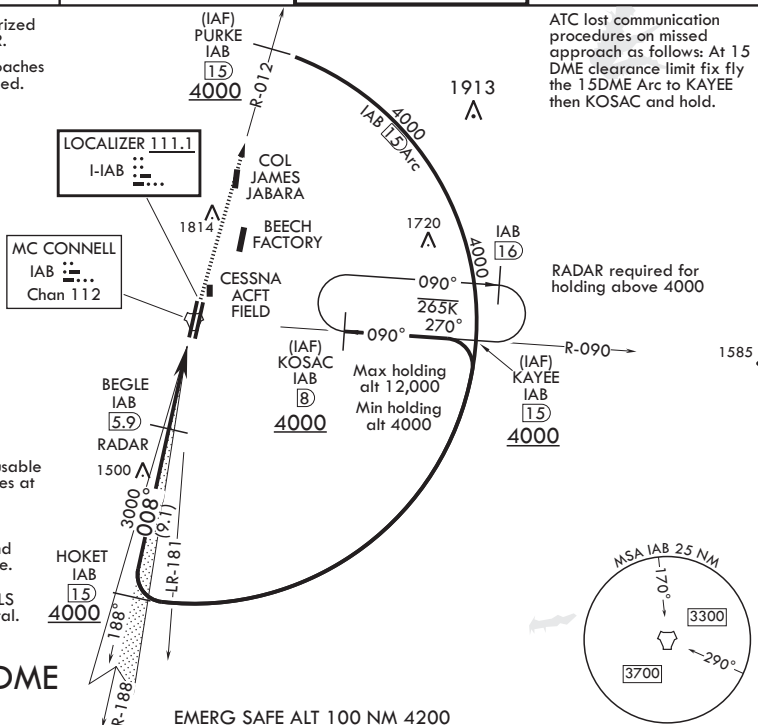
***** When ALS inop, increase CAT AB RVR to 55 and vis to 1 mile, CAT CDE RVR to 60 and vis to 1 1/8.**

MISSED APPROACH: Climb to 4000 via IAB TACAN R-012 to 15 DME (PURKE). Expect further clearance from ATC.

| | | | |
|------------------------|--------------------------------|-------------------------|------------------------|
| D ATIS 124.65 269.9 | WICHITA APP CON 134.8 269.1 | TOWER 127.25 291.775 | GND CON 118.0 275.8 |
|------------------------|--------------------------------|-------------------------|------------------------|

**** Circling not authorized
W of Rwy 1L-19R.
Practice circling approaches
NE of IAB not authorized.

ATC lost communication procedures on missed approach as follows: At 15 DME clearance limit fix fly the 15DME Arc to KAYEE then KOSAC and hold.

RADAR or DME
REQUIRED

EMERG SAFE ALT 100 NM 4200

| CATEGORY | A | B | C | D | E |
|----------------|-----------------------|---|-----------------------|-----------|---|
| S-ILS 1L* | 1547/24 | | 200 | (200-1/2) | |
| S-LOC 1L** | 1700/24 353 (400-1/2) | | 1700/35 353 (400-5/8) | | |
| SIDESTEP 1R*** | 1720/40 | | 373 | (400-3/4) | |

| | 1900-1 528 (600-1) | 1900-1 1/2 528 (600-1 1/2) | 2400-3 1028 (1100-3) |
|-----------------------|--------------------|----------------------------|----------------------|
| C CIRCLING**** | | | |

| | FAF to MAP 4.5 NM | | | | |
|---------|-------------------|------|------|------|------|
| Knots | 60 | 90 | 120 | 150 | 180 |
| Min-Sec | 4:30 | 3:00 | 2:15 | 1:48 | 1:30 |

WICHITA, KANSAS

37°37'N - 97°16'W

MC CONNELL AFB (KJAB)

Amdt 5 10SEP20

ILS or LOC RWY 1L