

WICHITA, KANSAS

## RNAV (GPS) RWY 19R

WAAS CH 71277 W19A	APCH CRS 189°	Rwy Idg 12,000 TDZE 1372 Arpt Elev 1372
--------------------------	------------------	---

AL-453 (USAF)

MC CONNELL AFB (KIAB)

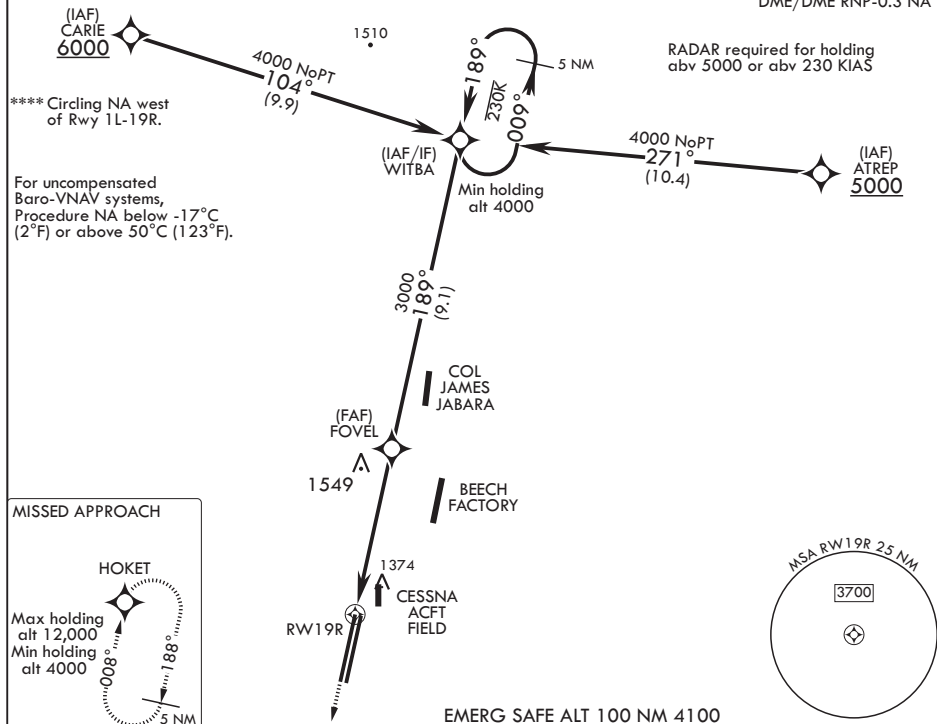
**T** \* When ALS inop, increase RVR to 40, vis to 3/4 mile.  
 \*\* When ALS inop, increase vis to 1 1/4 miles.  
 \*\*\* When ALS inop increase CAT AB RVR to 55, vis to 1 mile. CAT CDE vis to 1 3/8 miles.



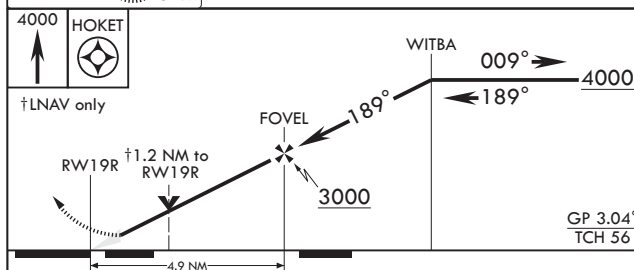
**MISSED APPROACH:** Climb to 4000  
direct HOKET and hold.


D ATIS 124.65 269.9	WICHITA APP CON 134.8 269.1	TOWER 127.25 291.775	GND CON 118.0 275.8
------------------------	--------------------------------	-------------------------	------------------------

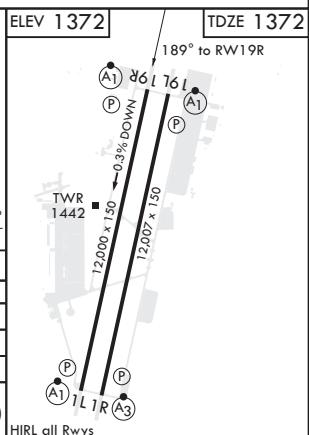
DME/DME RNP-0.3 NA



EMERG SAFE ALT 100 NM 4100



CATEGORY	A	B	C	D	E
LPV DA*	1572/24		200	(200-½)	
LNAV/VNAV DA**	1748/40		376	(400-¾)	
LNAV MDA***	1820/24 448 (500-½)		1820/45 448 (500-¾)		
 CIRCLING****	1900-1 528 (600-1)		1900-1½ 528 (600-1½)	2400-3 1028 (1100-3)	



WICHITA, KANSAS

37°37'N - 97°16'W

MC CONNELL AFB (KIAB)

Amdt 4 10SEP20

## RNAV (GPS) RWY 19R