

TACAN RWY 19R

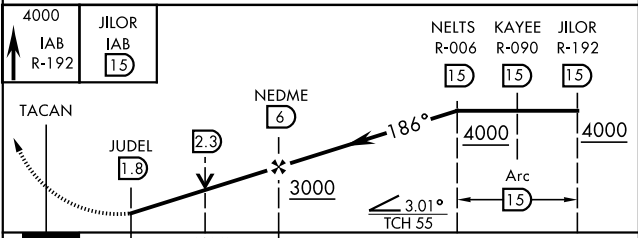
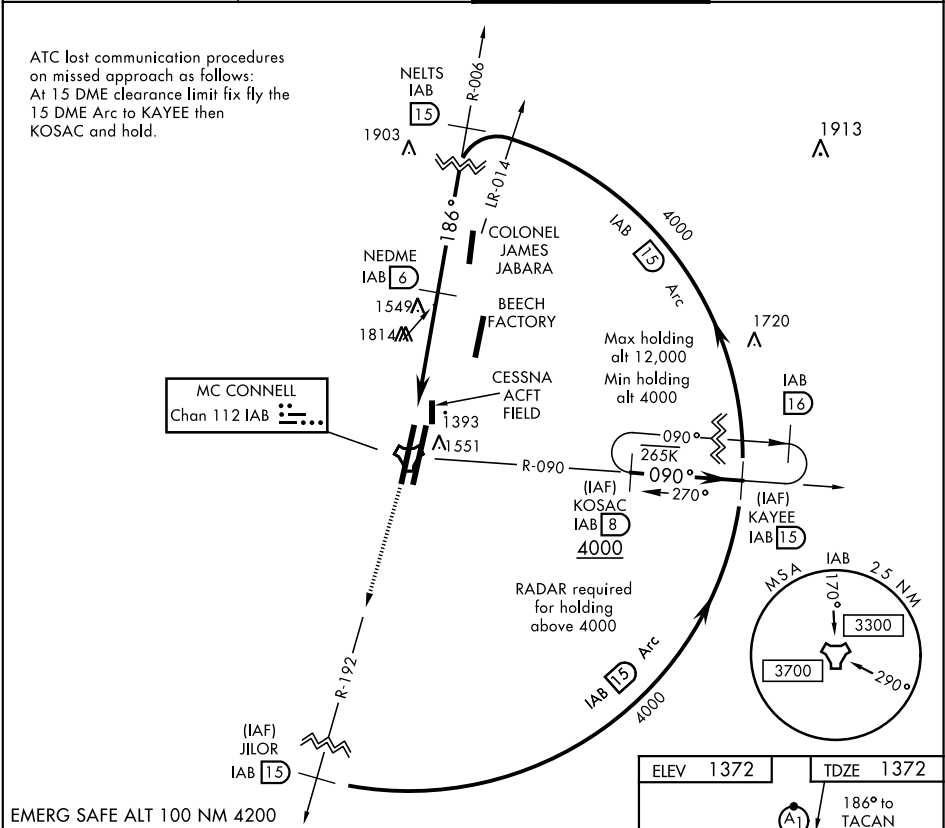
TACAN IAB Chan 112	APCH CRS 186°	Rwy ldg 12,000 TDZE 1372 Arprt Elev 1372	AL-453 [USAF]	MC CONNELL AFB (KIAB)
-----------------------	------------------	--	---------------	-----------------------

▼ * When ALS inop, increase CAT AB RVR to 55 and vis to 1 mile, CAT CDE vis to 1 3/4 miles.
** Circling not authorized W of Rwy 1L-19R.

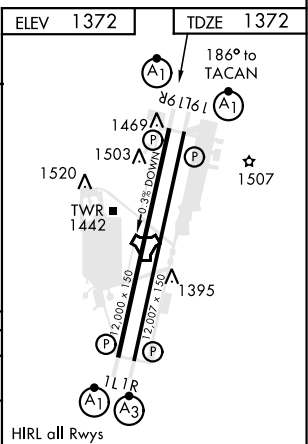
ALSF-1
A1

MISSED APPROACH: Climb to 4000 via IAB TACAN R-192 to 15 DME (JILOR). Expect further clearance from ATC.

D-ATIS 124.65 269.9	WICHITA APP CON 134.8 269.1	MC CONNELL TOWER 127.25 291.775	GND CON 118.0 275.8
------------------------	--------------------------------	------------------------------------	------------------------



CATEGORY	A	B	C	D	E
S-19R *	1820/24 448 (500-1/2)	1820/45 448 (500-3/4)	1820/45 448 (500-3/4)	1820/45 448 (500-3/4)	1820/45 448 (500-3/4)
CIRCLING **	1900-1 528 (600-1)	1900-1 528 (600-1)	1900-1 528 (600-1)	2400-3 1028 (1100-3)	2400-3 1028 (1100-3)



TACAN RWY 19R