

WICHITA, KANSAS

TACAN RWY 1L

TACAN IAB Chan 112	APCH CRS 012°	Rwy Idg TDZE Arpt Elev	12,000 1347 1372
-----------------------	------------------	------------------------------	------------------------

AL-453 (USAF)

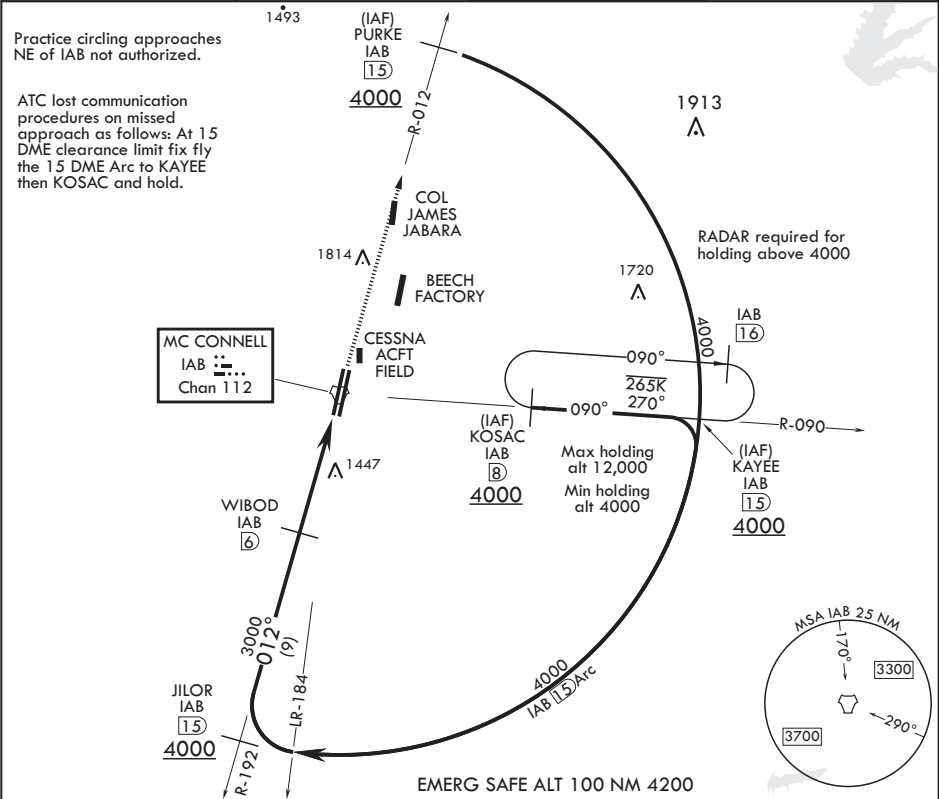
MC CONNELL AFB (KIAB)

V * When ALS inop, increase CAT AB RVR to 55 and vis to 1 mile, CAT CDE RVR to 60 and vis to 1 1/4 miles.
** Circling not authorized W of Rwy 1L-19R.

ALSIF-1
A1

MISSED APPROACH: Climb to 4000 via IAB TACAN R-012 to 15 DME (PURKE). Expect further clearance from ATC.

D ATIS 124.65 269.9	WICHITA APP CON 134.8 269.1	TOWER 127.25 291.775	GND CON 118.0 275.8
------------------------	--------------------------------	-------------------------	------------------------



WIBOD IAB 6

3000

012°

2.97° > TCH 59

4.4 NM

0.7

TACAN

COGMU 1.6

1.9

4000 PURKE IAB 15

ELEV 1372

TDZE 1347

TWR 1442

0.3% UP

12,000 x 150

12,007 x 150

012° 5.1 NM from FAF

HIRL all Rws

CATEGORY	A	B	C	D	E
S-1L*	1760/24 413 (400-1/2)		1760/40 413 (400-3/4)		
C CIRCLING**	1900-1 528 (600-1)		1900-1 1/2 528 (600-1 1/2)	2400-3 1028 (1100-3)	

WICHITA, KANSAS

37°37'N - 97°16'W

MC CONNELL AFB (KIAB)

Amdt 5 10SEP20

TACAN RWY 1L

NC-2, 31 DEC 2020 to 28 JAN 2021

NC-2, 31 DEC 2020 to 28 JAN 2021