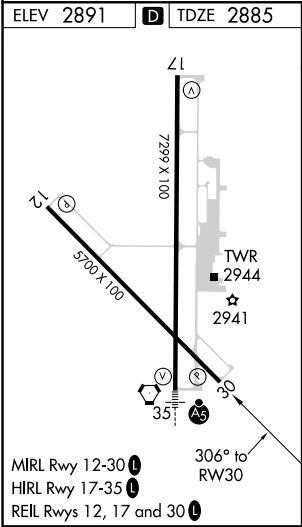
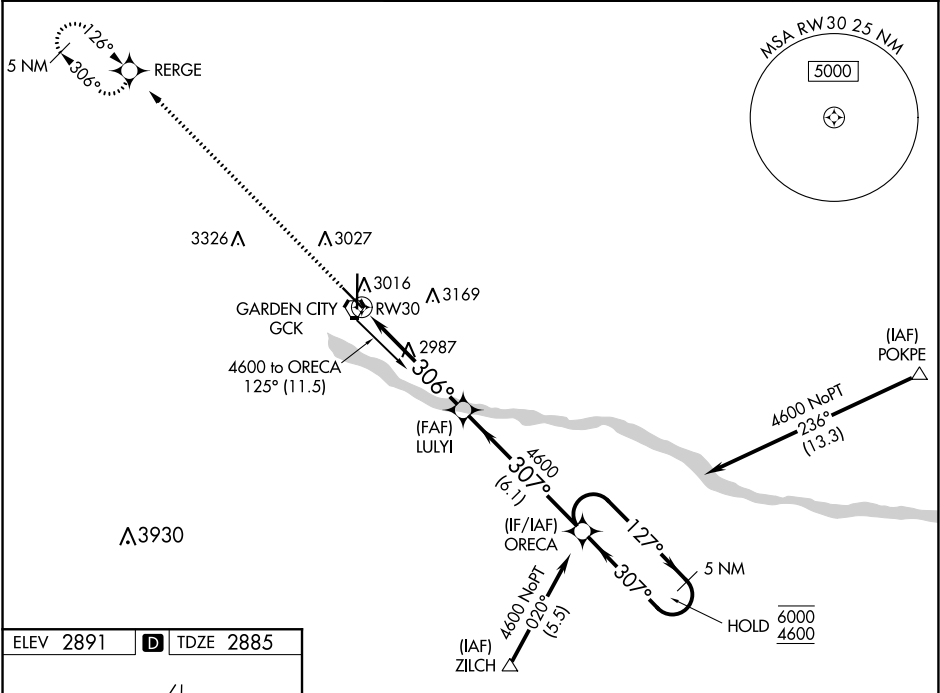


WAAS CH 86703 W30A	APP CRS 306°	Rwy Idg TDZE 2885 Apt Elev 2891
--	------------------------	---

RNAV (GPS) RWY 30
GARDEN CITY RGNL (GCK)

RNP APCH. For uncompensated Baro-VNAV systems, LNAV/VNAV NA below -20°C or above 43°C.		MISSED APPROACH: Climb to 4500 direct RERGE and hold.		
ASOS 121.325	KANSAS CITY CENTER 125.2 269.4	GARDEN CITY TOWER ★ 118.15 (CTAF) 0 254.4	GND CON 119.0 254.4	UNICOM 122.95



4500

↑

REGER

✦

LULYI

ORECA

5 NM Holding Pattern

1.2 NM to RW30

306°

307°

127°

4600

6000

4600

GP 3.00°

TCH 45

1.2 NM

4 NM

6.1 NM

RW30

1.2 NM

4 NM

6.1 NM

CATEGORY	A	B	C	D
LPV DA	3135-1 250 (300-1)			
LNAV/VNAV DA	3186-1 301 (300-1)			
LNAV MDA	3300-1 415 (500-1)	3300-1¼ 415 (500-1¼)		
CIRCLING	3320-1 429 (500-1)	3360-1 469 (500-1)	3480-1½ 589 (600-1½)	3480-2 589 (600-2)

NC-2, 31 DEC 2020 to 28 JAN 2021

NC-2, 31 DEC 2020 to 28 JAN 2021