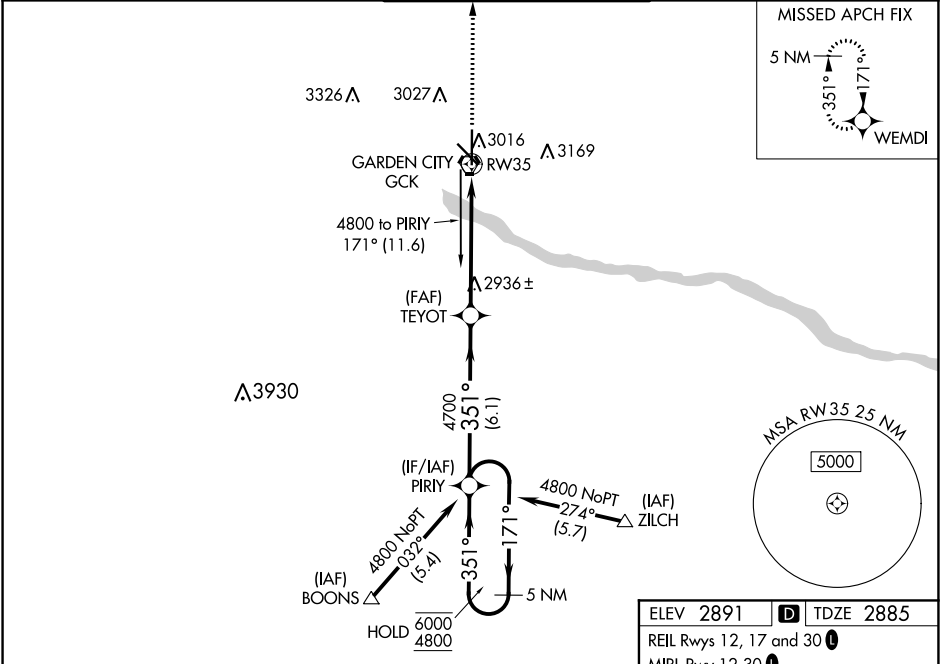


WAAS CH 63103 W35A	APP CRS 351°	Rwy Idg TDZE 2885 Apt Elev 2891
--	------------------------	---

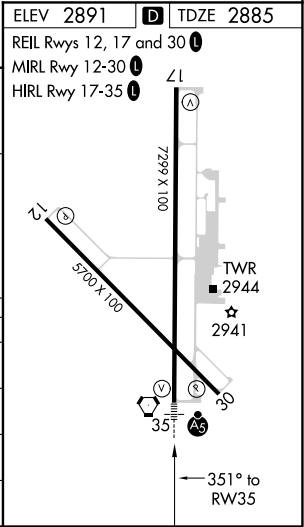
RNAV (GPS) RWY 35
GARDEN CITY RGNL (GCK)

RNP APCH. ⚠ For uncompensated Baro-VNAV systems, LNAV/VNAV NA below -20°C or above 43°C. For inop ALS, increase LNAV/VNAV all Cts visibility to ½ SM, and LNAV Cat C visibility to ¾ SM. Inop table does not apply to LNAV Cat D.	MALSR 	MISSED APPROACH: Climb to 4700 direct WEMDI and hold.
---	-----------	---

ASOS 121.325	KANSAS CITY CENTER 125.2 269.4	GARDEN CITY TOWER * 118.15 (CTAF) 0 254.4	GND CON 119.0 254.4	UNICOM 122.95
------------------------	--	---	-------------------------------	-------------------------



VGSI and RNAV glidepath not coincident (VGSI Angle 3.00/TCH 41).				
5 NM Holding Pattern				
6000 ← 171° 4800 → 351°				
GP 3.00° TCH 59				
6.1 NM 4.6 NM 0.9 NM				
CATEGORY	A	B	C	D
LPV DA	3135-½ 250 (300-½)			
LNAV/VNAV DA	3169-½ 284 (300-½)			3169-¾ 284 (300-¾)
LNAV MDA	3200-½ 315 (400-½)			3200-1 315 (400-1)
CIRCLING	3320-1 429 (500-1)	3360-1 469 (500-1)	3480-1½ 589 (600-1½)	3480-2 589 (600-2)



NC-2, 31 DEC 2020 to 28 JAN 2021

NC-2, 31 DEC 2020 to 28 JAN 2021