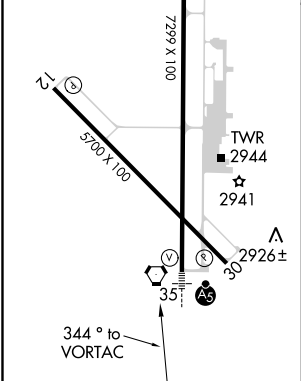
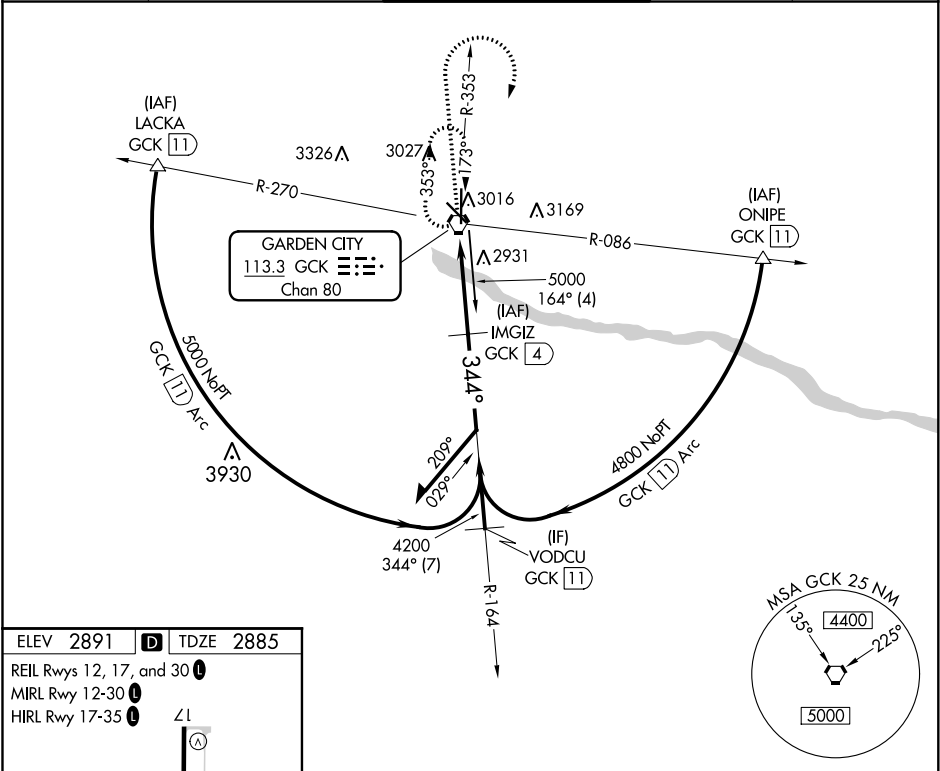


VORTAC GCK	APP CRS	Rwy Idg	7299
113.3	344°	TDZE	2885
Chan 80		Apt Elev	2891

VOR RWY 35
GARDEN CITY RGNL (GCK)

DME required.	MALSR	MISSED APPROACH: Climb to 4000 then climbing right turn to 4800 direct GCK VORTAC and hold.
For inop ALS, increase S-35 Cat C visibility to ¾ SM. Inop table does not apply to S-35 Cat D.		

ASOS 121.325	KANSAS CITY CENTER 125.2 269.4	GARDEN CITY TOWER ★ 118.15 (CTAF) 0 254.4	GND CON 119.0 254.4	UNICOM 122.95
-----------------	-----------------------------------	--	------------------------	------------------



4000	4800	GCK	IMGIZ GCK 4	Remain within 10 NM
			GCK VORTAC	
			3.02° TCH 41	
			0.9	3.1 NM
CATEGORY	A	B	C	D
S-35	3200-½ 315 (400-½)		3200-¾ 315 (400-¾)	3200-1 315 (400-1)
CIRCLING	3320-1 429 (500-1)	3360-1 469 (500-1)	3480-1½ 589 (600-1½)	3480-2 589 (600-2)

NC-2, 31 DEC 2020 to 28 JAN 2021

NC-2, 31 DEC 2020 to 28 JAN 2021