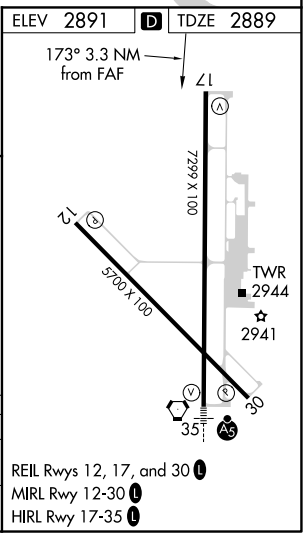
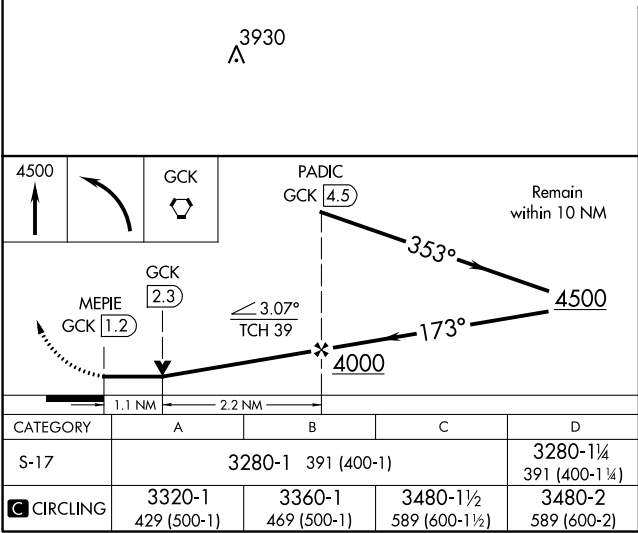
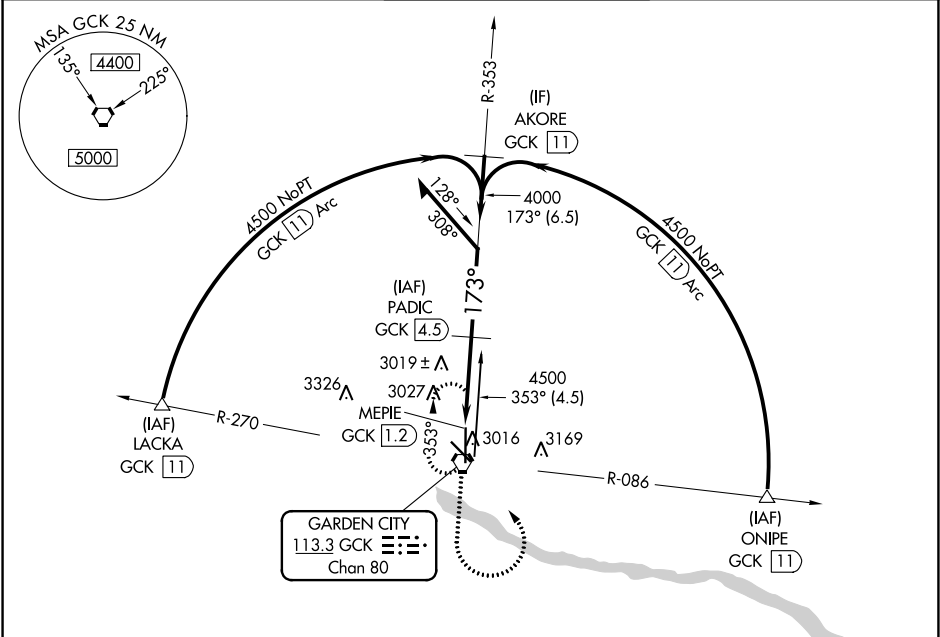


VORTAC GCK <b>113.3</b> Chan <b>80</b>	APP CRS <b>173°</b>	Rwy Idg <b>7299</b> TDZE <b>2889</b> Apt Elev <b>2891</b>
--	------------------------	---

VOR/DME RWY 17  
GARDEN CITY RGNL (GCK)

<p><b>⚠</b> When local altimeter setting not received, use Dodge City Rgnl altimeter setting and increase all MDA 140 feet and Circling Cat C visibility ½ SM and Circling Cat D visibility ¼ SM. VDP NA when using Dodge City altimeter setting.</p>	<p><b>MISSED APPROACH:</b> Climb to 4500, then left turn direct GCK VORTAC and hold.</p>
---	--

ASOS <b>121.325</b>	KANSAS CITY CENTER <b>125.2 269.4</b>	GARDEN CITY TOWER ★ <b>118.15 (CTAF) 0 254.4</b>	GND CON <b>119.0 254.4</b>	UNICOM <b>122.95</b>
------------------------	--	---	-------------------------------	-------------------------



NC-2, 31 DEC 2020 to 28 JAN 2021

NC-2, 31 DEC 2020 to 28 JAN 2021