

LOC I-LBL <b>111.3</b>	APP CRS <b>354°</b>	Rwy Idg TDZE Apt Elev	<b>7101</b> <b>2875</b> <b>2886</b>
---------------------------	------------------------	-----------------------------	---

ILS or LOC RWY 35

LIBERAL MID-AMERICA RGNL (L.B.L.)

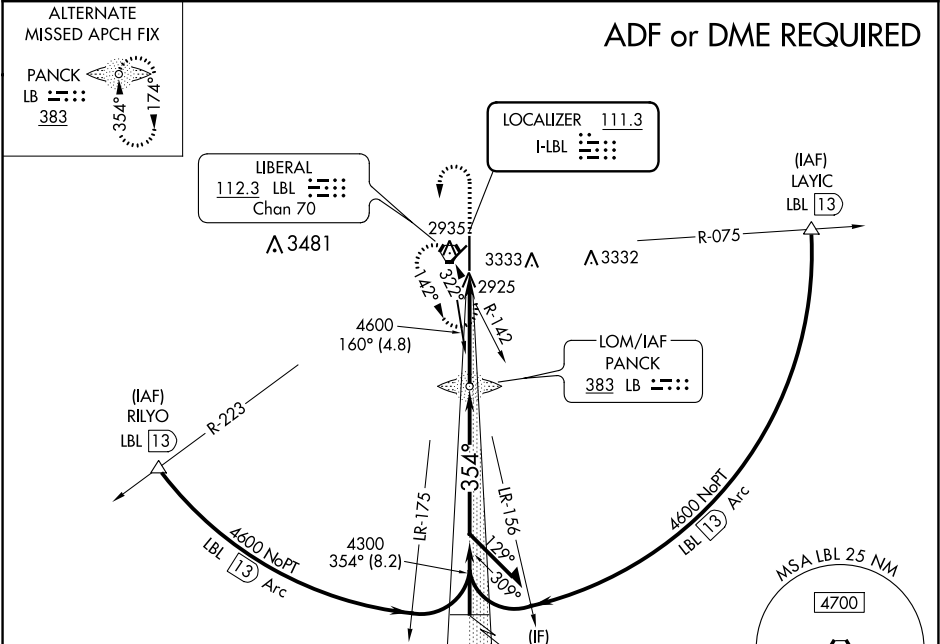
⚠

Circling NA east of Rwy 17-35. When local altimeter setting not received, use Guymon Muni altimeter setting: Increase all DA 112 feet and all MDA 120 feet. Increase S-LOC Cats C and D visibility ¾ mile; Circling Cat D visibility ¼ mile.

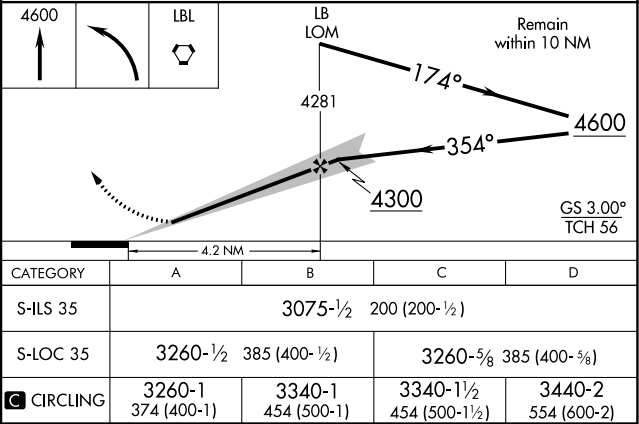
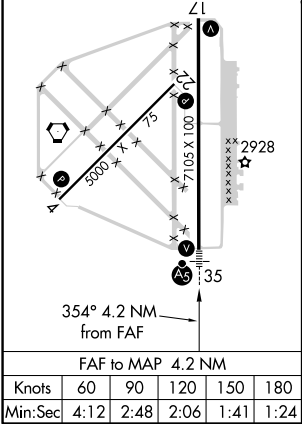
MALSR

MISSED APPROACH: Climb to 4600 then left turn direct LBL VORTAC and hold.

AWOS-3PT <b>118.375</b>	KANSAS CITY CENTER <b>134.0 257.865</b>	UNICOM <b>122.8 (CTAF)</b>
----------------------------	--	-------------------------------



ELEV 2886	D	TDZE 2875
REIL Rwy 4, 17 and 22	1	
MIRL Rwy 4-22	1	
HIRL Rwy 17-35	1	



NC-2, 31 DEC 2020 to 28 JAN 2021

NC-2, 31 DEC 2020 to 28 JAN 2021