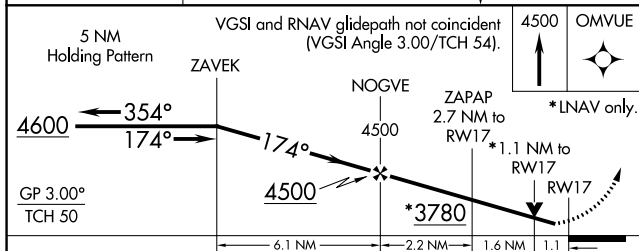
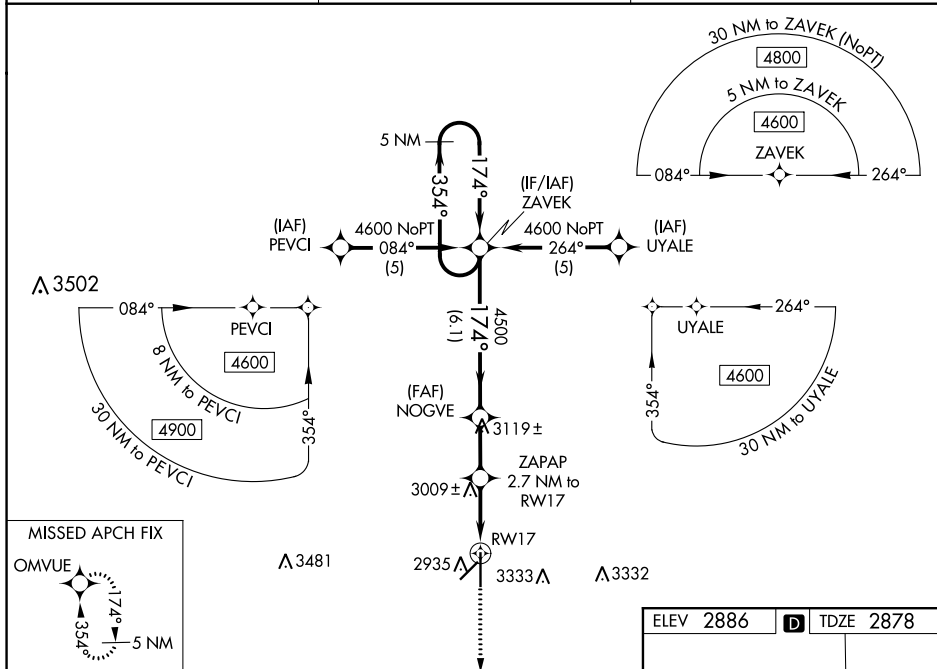



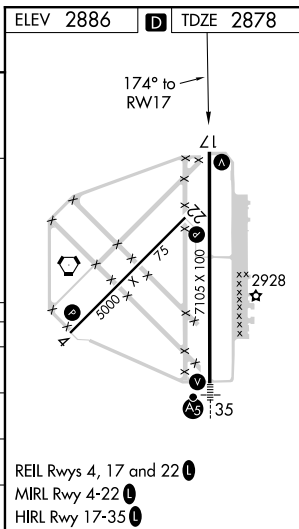
RNAV (GPS) RWY 17
LIBERAL MID-AMERICA RGNL (LBL)

- | | |
|--|---|
| <p>▼ For uncompensated Baro-VNAV systems, LNAV/VNAV NA below -20°C (-4°F) or above 53°C (128°F).</p> <p>▲ Circling NA east of Rwy 17-35. DME/DME RNP-0.3 NA. When local altimeter setting not received, use Guymon Muni altimeter setting: Increase all DA 112 feet and all MDA 120 feet; increase all visibilities $\frac{3}{8}$ mile. Helicopter visibility reduction below $\frac{3}{4}$ SM NA. VDP NA when using Guymon Muni altimeter setting. Baro-VNAV NA when using Guymon Muni altimeter setting.</p> | <p>MISSED APPROACH:
Climb to 4500 direct OMVUE and hold.</p> |
|--|---|

AWOS-3PT 118.375	KANSAS CITY CENTER 134.0 257.865	UNICOM 122.8 (CTAF) 0
----------------------------	--	---------------------------------



CATEGORY	A	B	C	D
LPV DA	3128- $\frac{3}{4}$ 250 (300- $\frac{3}{4}$)			
LNAV/ VNAV DA	3320-1 $\frac{1}{2}$ 442 (500-1 $\frac{1}{2}$)			
LNAV MDA	3260-1	382 (400-1)	3260-1 $\frac{1}{8}$	382 (400-1 $\frac{1}{8}$)
 CIRCLING	3260-1 374 (400-1)	3340-1 454 (500-1)	3340-1 $\frac{1}{2}$ 454 (500-1 $\frac{1}{2}$)	3440-2 554 (600-2)



DEC-2 31 DEC 2020 to 28 JAN 2021