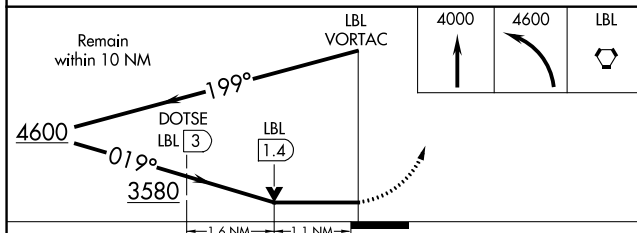
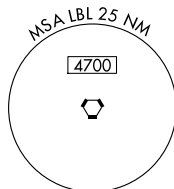
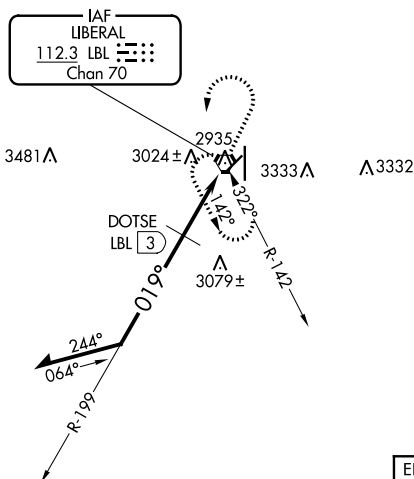




VOR RWY 4
LIBERAL MID-AMERICA RGNL (LBL)

MISSED APPROACH: Climb to 4000 then climbing left turn to 4600 direct LBL VORTAC and hold.

△ 3502



CATEGORY	A	B	C	D
S-4	3580-1 695 (700-1)		3580-2 695 (700-2)	3580-2½ 695 (700-2½)
 CIRCLING	3580-1 694 (700-1)		3580-2 694 (700-2)	3580-2½ 694 (700-2½)
DME MINIMUMS				
S-4	3280-1 395 (400-1)			3280-1½ 395 (400-1½)
 CIRCLING	3340-1 454 (500-1)		3340-1½ 454 (500-1½)	3440-2 554 (600-2)

