

WAAS CH 99607 W17A	APP CRS 173°	Rwy Idg TDZE 1953 Apt Elev 1953
--	------------------------	---

RNAV (GPS) RWY 17

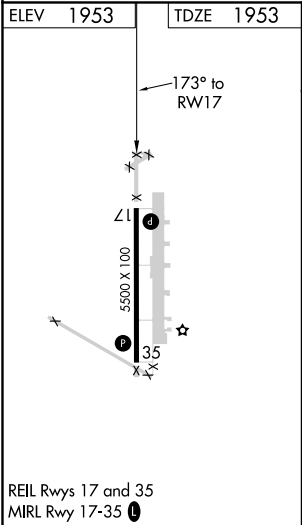
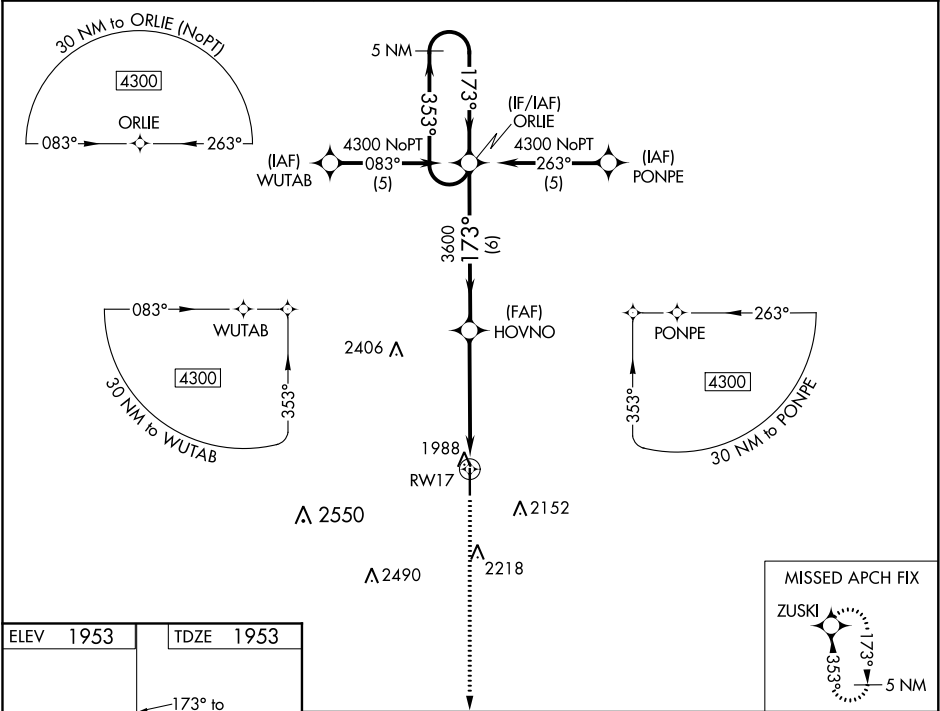
PRATT RGNL (P'TT')

⚠

For uncompensated Baro-VNAV systems, LNAV/VNAV NA below -18°C (0°F) or above 54°C (130°F). DME/DME RNP-0.3 NA. When local altimeter setting not received use Great Bend altimeter setting and increase all DA/MDA 100 feet and LPV visibility ¼ mile all Cats, LNAV/VNAV visibility ½ mile all Cats and LNAV Cat C ¼ mile. Baro-VNAV and VDP NA when using Great Bend altimeter setting.

MISSED APPROACH: Climb to 4300 direct ZUSKI and hold.

AWOS-3PT 118.725	KANSAS CITY CENTER 118.8 322.425	UNICOM 122.8 (CTAF) 0
----------------------------	--	---------------------------------



5 NM Holding Pattern		ORLIE	HOVNO	4300	ZUSKI
4300		353°	173°	173°	
GP 3.00°		TCH 40	3600	*1.1 NM to RW17	*LNAV only.
		6 NM	3.9 NM	1.1 NM	
CATEGORY	A	B	C	D	
LPV DA	2203-1	250 (300-1)			NA
LNAV/VNAV DA	2258-1	305 (400-1)			NA
LNAV MDA	2340-1	387 (400-1)			NA
CIRCLING	2380-1 427 (500-1)	2420-1 467 (500-1)	2420-1½ 467 (500-1½)		NA