

WAAS CH 65615 W03A	APP CRS 028°	Rwy Idg 5211 TDZE 3294 Apt Elev 3298
--	------------------------	---

RNAV (GPS) RWY 3

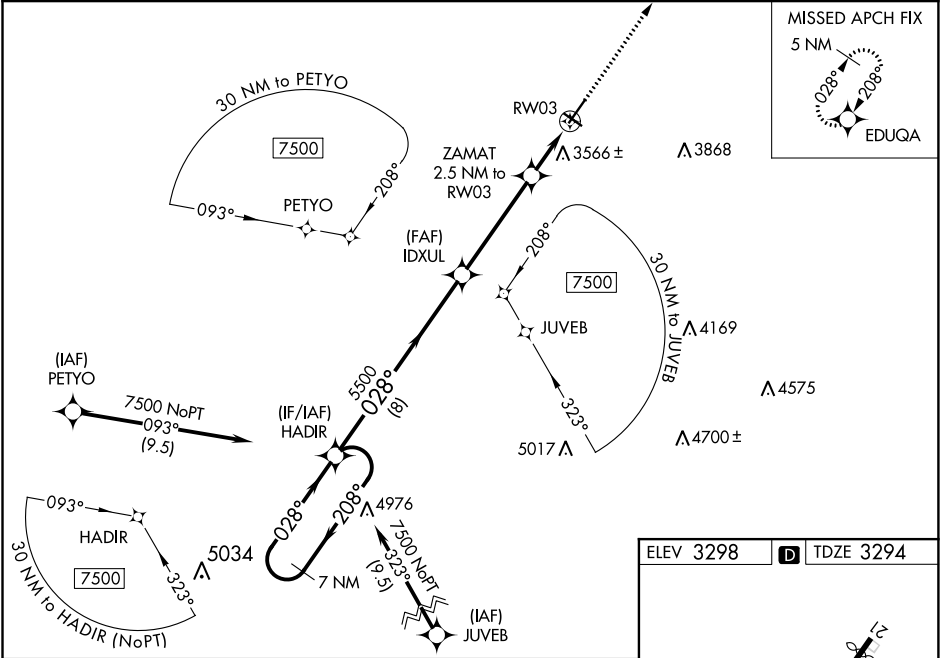
CHADRON MUNI (CDR)

Baro-VNAV NA when using Pine Ridge altimeter setting. For uncompensated Baro-VNAV systems, LNAV/VNAV NA below -21°C (-5°F) or above 23°C (73°F). For inop MALSR, when using Pine Ridge altimeter setting, increase LPV all Cats visibility to ¾. DME/DME RNP -0.3 NA. VDP NA with Pine Ridge altimeter setting. When local altimeter setting not received, use Pine Ridge altimeter setting and increase all DA 70 feet and all MDA 80 feet; increase LNAV/VNAV all Cats visibility ¼ mile, increase LNAV Cats C and D visibility ⅓ mile, and increase Circling Cats C and D visibility ¼ mile.

MALSR

MISSED APPROACH:
Climb to 5100 direct
EDUQA and hold.

ASOS 118.05	DENVER CENTER 127.95 338.2	UNICOM 122.8 (CTAF) 0
-----------------------	--------------------------------------	---------------------------------



7 NM Holding Pattern HADIR		VGSI and RNAV glidepath not coincident (VGSI Angle 3.00/TCH 61).		5100 EDUQA	
7500 ← 208°		→ 028°		*LNAV only	
GP 3.00° TCH 60		5500		*4140	
		8 NM		1 NM	
		4.2 NM		1.5 NM	
CATEGORY	A	B	C	D	
LPV DA	3494-½		200 (200-½)		
LNAV/VNAV DA	3902-1 5/8		608 (700-1 5/8)		
LNAV MDA	3820-½	526 (600-½)	3820-1	526 (600-1)	
CIRCLING	3820-1	522 (600-1)	3880-1	582 (600-1)	
	522 (600-1)	582 (600-1)	3920-1 3/4	622 (700-1 3/4)	
			3920-2	622 (700-2)	

