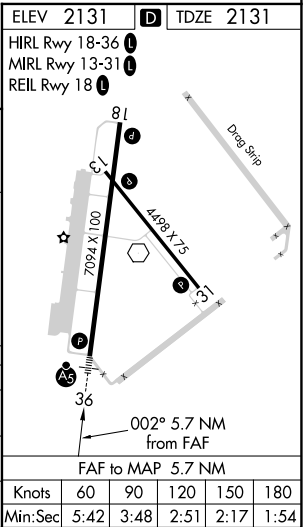
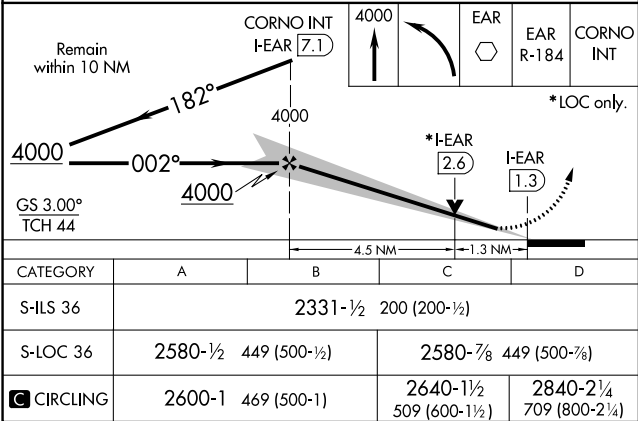
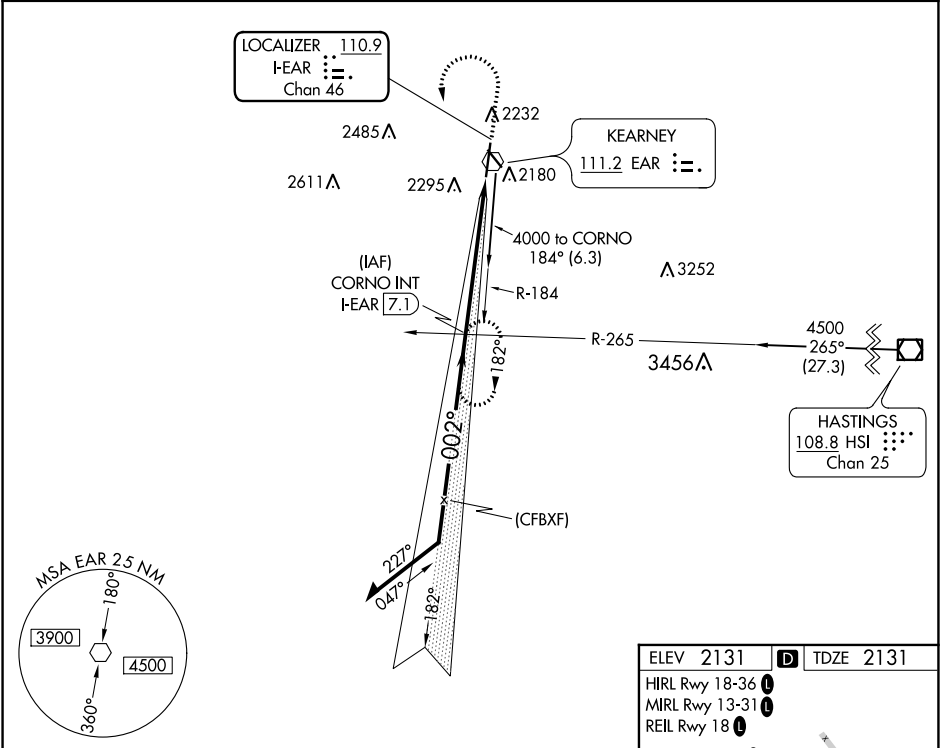


LOC/DME I- <b>EAR</b> <b>110.9</b> Chan <b>46</b>	APP CRS <b>002°</b>	Rwy Idg <b>7094</b> TDZE <b>2131</b> Apt Elev <b>2131</b>
---	------------------------	---

ILS or LOC RWY 36  
KEARNEY RGNL (EAR)

<b>NA</b>	MALSR 	MISSED APPROACH: Climb to 4000 then left turn direct EAR VOR then on EAR R-184 to CORNO INT/ I- <b>EAR</b> 7.1 DME and hold.
-----------	-----------	--

AWOS-3PT <b>123.875</b>	MINNEAPOLIS CENTER <b>119.4 278.8</b>	UNICOM <b>123.0</b> (CTAF) <b>0</b>
----------------------------	--	--



NC-2, 31 DEC 2020 to 28 JAN 2021

NC-2, 31 DEC 2020 to 28 JAN 2021