

WAAS CH <b>65631</b> <b>W13A</b>	APP CRS <b>136°</b>	Rwy Idg <b>4498</b> TDZE <b>2130</b> Apt Elev <b>2131</b>
----------------------------------------	------------------------	-----------------------------------------------------------------

RNAV (GPS) RWY 13

KEARNEY RGNL (E.A.R.)

RNP APCH.

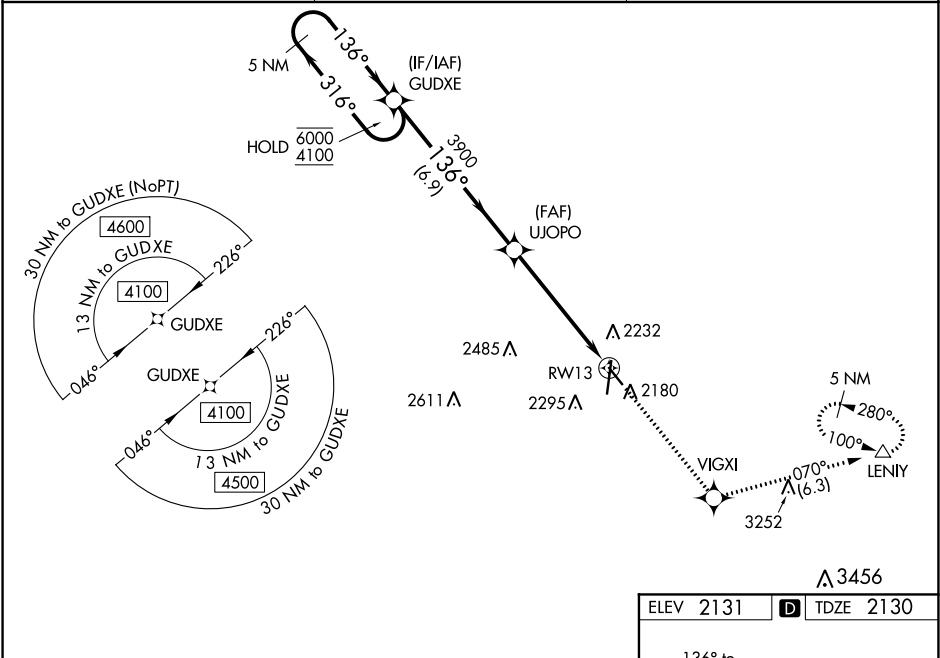
▼

⚠

Baro-VNAV and VDP NA when using Holdrege altimeter setting. For uncompensated Baro-VNAV systems, LNAV/VNAV NA below -23°C or above 54°C. When local altimeter setting not received, use Holdrege altimeter setting: increase LPV DA to 2407 feet and all Cats visibility ⅓ SM; increase LNAV/VNAV DA to 2457 feet and all Cats visibility ⅓ SM and all MDAs 80 feet; increase visibility LNAV and Circling Cat C ⅓ SM.

MISSED APPROACH: Climb to 4300 direct VIGXI and on track 070° to LENIY and hold.

AWOS-3PT <b>123.875</b>	MINNEAPOLIS CENTER <b>119.4 278.8</b>	UNICOM <b>123.0 (CTAF) 0</b>
----------------------------	------------------------------------------	---------------------------------



VGSI and RNAV glidepath not coincident (VGSI Angle 3.00/TCH 43).		4300	VIGXI	tr 070°	LENIY
5 NM Holding Pattern		GUDXE	UJOPO		
6000 ← 316° 4100 ← 136°		3900			
GP 3.00° TCH 43					
		6.9 NM	3.9 NM	1.5 NM	
CATEGORY	A	B	C	D	
LPV DA	2330-¾ 200 (200-¾)			NA	
LNAV/VNAV DA	2380-¾ 250 (300-¾)			NA	
LNAV MDA	2720-1	590 (600-1)	2720-1¾ 590 (600-1¾)	NA	
CIRCLING	2720-1	589 (600-1)	2720-1¾ 589 (600-1¾)	NA	

