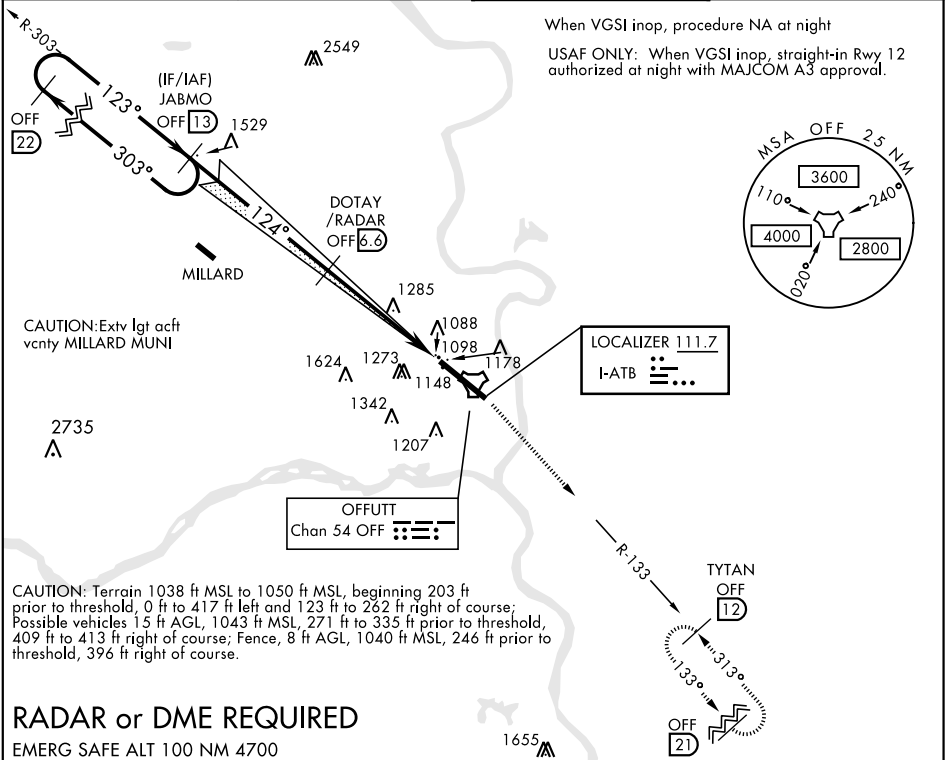


ILS or LOC RWY 12

LOC I-ATB <b>111.7</b>	APCH CRS <b>124°</b>	Rwy ldg <b>10,696</b> TDZE <b>1049</b> Arprt Elev <b>1049</b>	AL-544 [USAF]	OFFUTT AFB (KOFF)
* When ALS inop, increase CAT AB RVR to 55, CAT CDE vis to 1 3/8 miles. ** Circling not authorized N of Rwy 12-30.			ALSf-1 	MISSED APPROACH: Climb to 3000 via OFF TACAN R-133 to TYTAN and hold.
ATIS <b>126.025 273.5</b>	OMAHA APP CON E <b>124.5 263.0</b> W <b>120.1 354.05</b>	OFFUTT TOWER <b>123.7 279.625</b>	GND CON <b>121.7 289.4</b>	



RADAR or DME REQUIRED

EMERG SAFE ALT 100 NM 4700

JABMO Rwy 12 ILS glideslope unusable beyond 5° left of LOC course		3000 OFF R-133	TYTAN OFF 12	ELEV 1049	TDZE 1049
		124° 5.4 NM from FAF	1255	HIRL Rwy 12-30	
GS 3.00° TCH 51		DOTAY/RADAR 6.6	GAYEB 1.7	TACAN	TWR 1157
CATEGORY	A	B	C	D	E
S-ILS 12	1299/50		250	(300-1)	
S-LOC 12 *	1580/50	531 (600-1)	1580/55	531	(600-1)
CIRCLING **	1580-1 531 (600-1)	1600-1 551 (600-1)	1680-1 3/4 631 (700-1 3/4)	1940-3	891 (900-3)
FAF to MAP 4.9 NM					
Knots		60	90	120	150 180
Min:Sec		4:54	3:16	2:27	1:58 1:38

ILS or LOC RWY 12