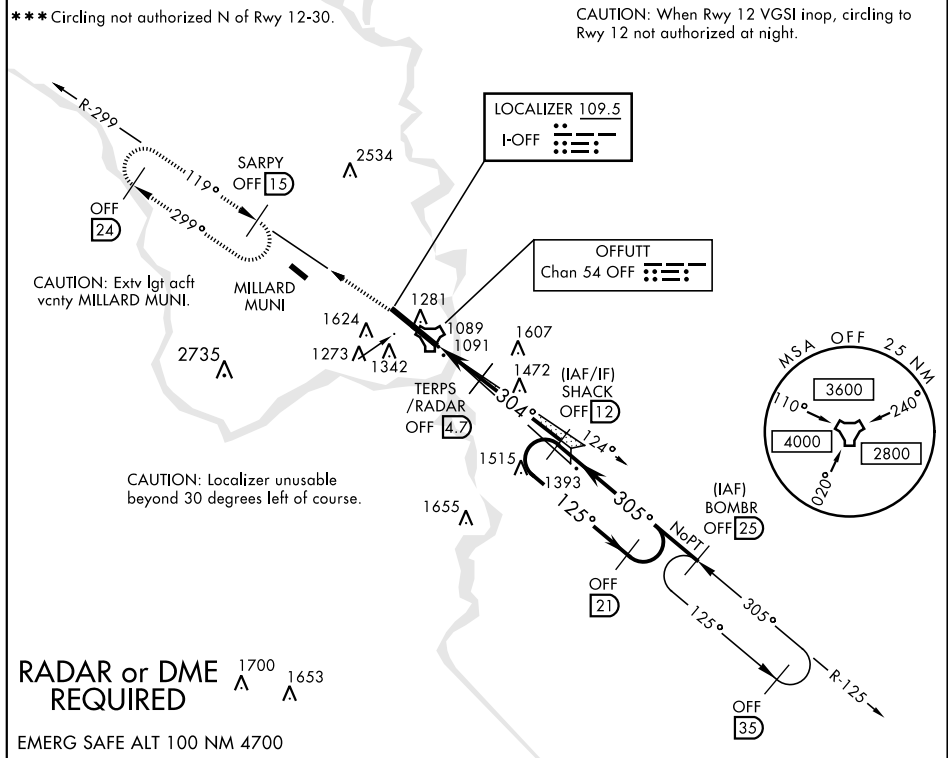


# ILS or LOC Y RWY 30

LOC I-OFF <b>109.5</b>	APCH CRS <b>304°</b>	Rwy ldg <b>10,612</b> TDZE <b>985</b> Arpt Elev <b>1049</b>	AL-544 [USAF]	OFFUTT AFB (KOFF)
<b>▼</b> * When ALS inop, increase CAT ABCDE RVR to 40 and vis to ¾ mile. ** When ALS inop, increase CAT ABCDE RVR to 55 and vis to 1 mile.			ALSF-1 <b>(A1)</b>	MISSED APPROACH: Climb to 3000 via OFF TACAN R-299 to SARPY and hold.

ATIS <b>126.025 273.5</b>	OMAHA APP CON E <b>124.5 263.0</b> W <b>120.1 354.05</b>	OFFUTT TOWER <b>123.7 279.625</b>	GND CON <b>121.7 289.4</b>
------------------------------	----------------------------------------------------------------	--------------------------------------	-------------------------------



3000

OFF R-299

SARPY

OFF 15

† LOC only

TACAN

CULUX 9

5 NM

3.8 NM

TERPS /RADAR 4.7

2300

SHACK 12

3000

BOMBR 25

9500

GS 2.80°

TCH 58

305°

125°

305°

304°

ELEV 1049

TDZE 985

1255

HIRL Rwy 12-30

TWR 1157

0.7° UP

11,703 × 150

304° 4.3 NM

from FAF

Rwy 12 ldg 10,696'

Rwy 30 ldg 10,612'

Rwy 12-30 ALS nstd

FAF to MAP 3.8 NM

Knots

60 90 120 150 180

Min:Sec

3:48 2:32 1:54 1:31 1:16

1500-1

451 (500-1)

1600-1

551 (600-1)

1680-1¾

631 (700-1¾)

1940-3

891 (900-3)

# ILS or LOC Y RWY 30