

OMAHA, NEBRASKA

## RNAV (GPS) RWY 30

WAAS CH 91357 W30A	APCH CRS 304°	Rwy Idg 10,612 TDZE 985 Arpt Elev 1049
--------------------------	------------------	--

AL-544 (USAF)

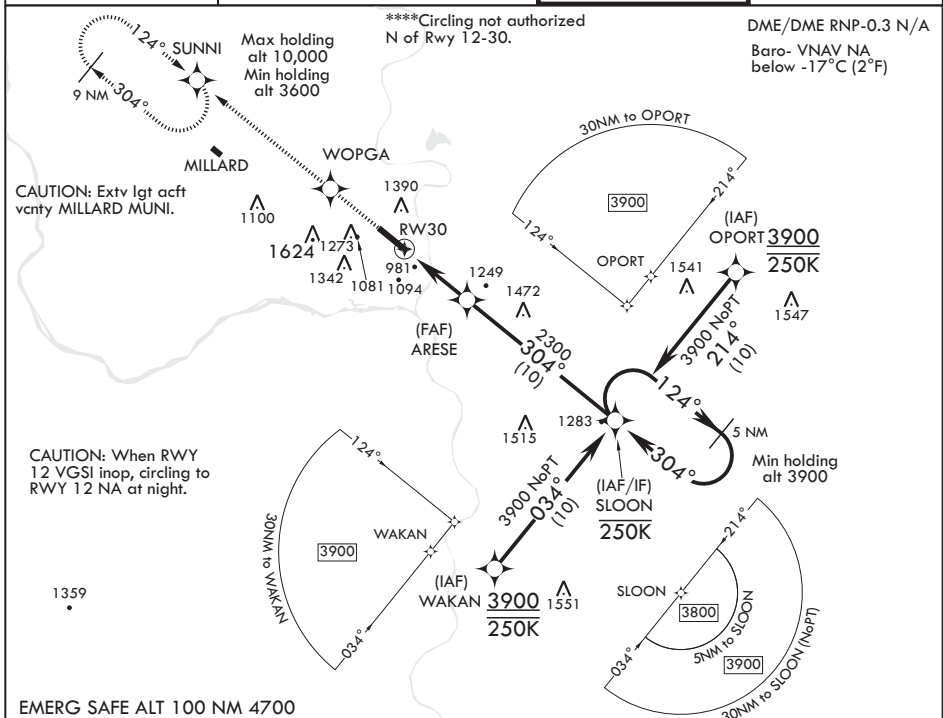
OFFUTT AFB (KOFF)

**T** \* When ALS inop, increase all CAT RVR to 40 and vis to 3/4 mile.  
 \*\* When ALS inop, increase all CAT vis to 1 1/2 miles.  
 \*\*\* When ALS inop, increase CAT AB RVR to 55, vis to 1 mile, CAT CDE vis to 1 3/4 miles.



**MISSED APPROACH:** Climb direct to WOPGA, then track 304° to SUNNI and hold, maintain 3600.

ATIS 126.025 273.5	OMAHA APP CON/DEP CON 120.1 354.05 W 124.5 263.0 E	TOWER 123.7 279.625	GND CON 121.7 289.4
-----------------------	--	------------------------	------------------------



CATEGORY	A	B	C	D	E
LPV DA*	1185/24	200	(200-1/2)		
LNAP/VNAP DA**	1400/55	415	(400-1)		
LNAP MDA***	1620/24 635 (600-1/2)	1620-1 3/8	635 (600-1 3/8)		
<b>C</b> CIRCLING****	1620-1 571 (600-1)	1680-1 3/4 631 (700-1 3/4)	1940-3 891 (900-3)		

**CIRCLING\*\*\*\***

OMAHA, NEBRASKA

41°07'N - 95°55'W

OFFUTT AFB (KOFF)

## RNAV (GPS) RWY 30

Amdt 2 19JUL18

## TERPS