
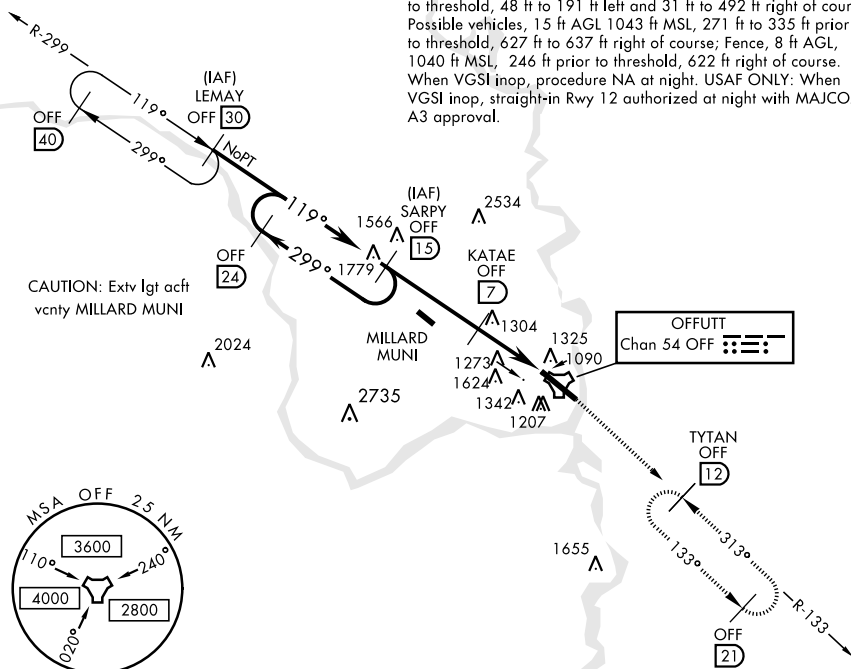


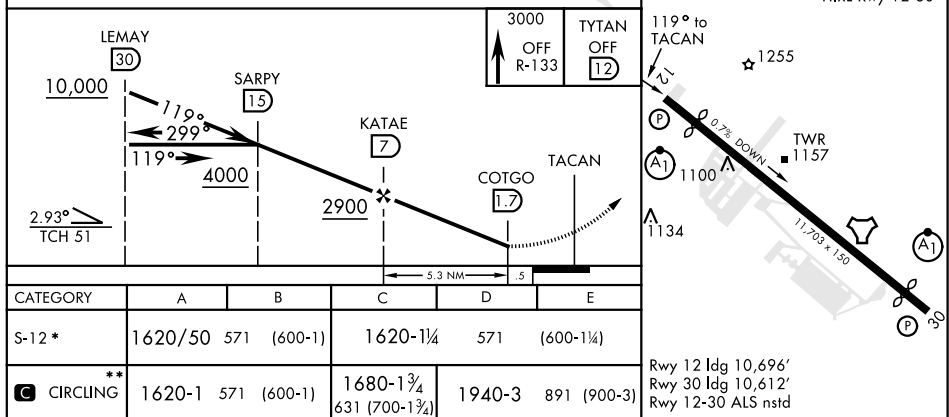
TACAN Y RWY 12

TACAN OFF Chan 54	APCH CRS 119°	Rwy Idg 10,696 TDZE 1049 Arpt Elev 1049	AL-544 [USAF]	TACAN TRWT 12	OFFUTT AFB (KOFF)
<p>▼ * When ALS inop, increase CAT AB RVR to 55, CAT CDE vis to 1 3/4 miles.</p> <p>** Circling not authorized N of Rwy 12-30.</p>			ALSF-1 	MISSED APPROACH: Climb to 3000 via OFF TACAN R-133 to TYTAN and hold.	
ATIS 126.025 273.5		OMAHA APP CON E 124.5 263.0 W 120.1 354.05	OFFUTT TOWER 123.7 279.625	GND CON 121.7 289.4	

CAUTION: Terrain 1038 ft MSL to 1050 ft MSL, beginning 203 ft prior to threshold, 48 ft to 191 ft left and 31 ft to 492 ft right of course; Possible vehicles, 15 ft AGL 1043 ft MSL, 271 ft to 335 ft prior to threshold, 627 ft to 637 ft right of course; Fence, 8 ft AGL, 1040 ft MSL, 246 ft prior to threshold, 622 ft right of course. When VGS1 inop, procedure NA at night. USAF ONLY: When VGS1 inop, straight-in Rwy 12 authorized at night with MAJCOM A3 approval.



EMERG SAFE ALT 100 NM 4700



TACAN Y RWY 12