

WAAS CH 81938 W32A	APP CRS 326°	Rwy Idg TDZE Apt Elev 6329 2591 2596
--	------------------------	--

RNAV (GPS) RWY 32

DODGE CITY RGNL (DDC)

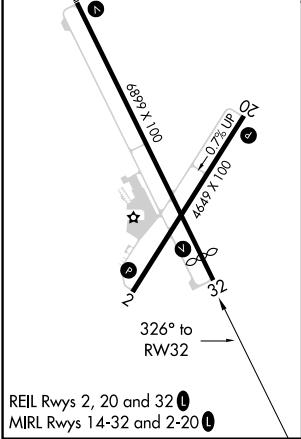
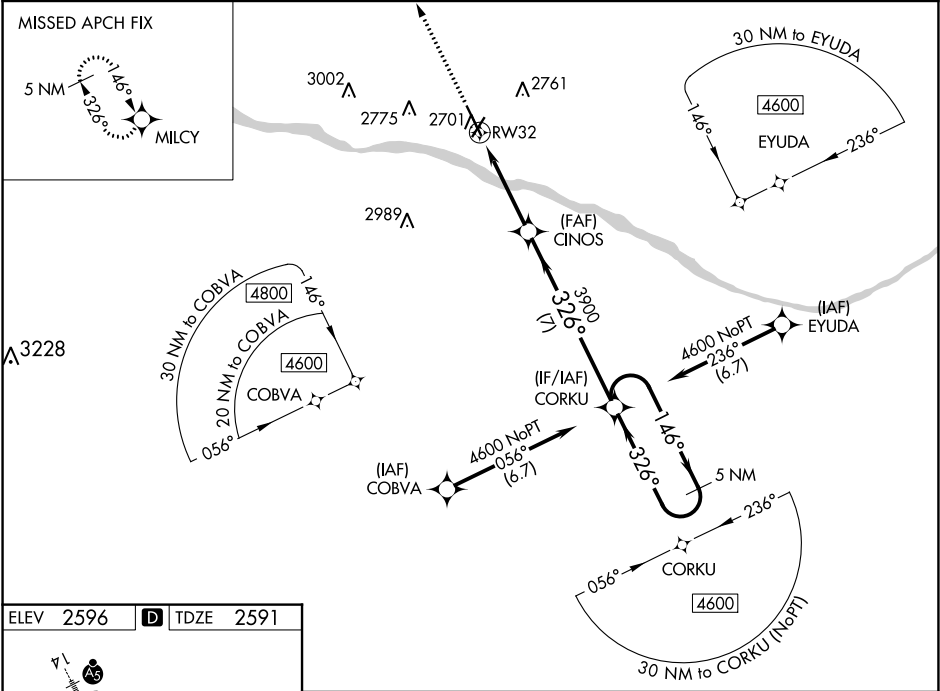
⚠

☁ -20°C

DME/DME RNP-0.3 NA. Baro-VNAV and VDP NA when using Garden City altimeter setting. For uncompensated Baro-VNAV systems, LNAV/VNAV NA below -19°C (-2°F) or above 54°C (130°F). When local altimeter setting not received, use Garden City altimeter setting: increase LPV DA to 2919 feet and all visibilities ¾ miles, LNAV/VNAV DA to 2969 feet and all visibilities ¾ mile; increase all MDA 140 feet and LNAV visibility Cat C and D ¾ mile and Circling visibility Cat C and D ½ mile.

MISSED APPROACH:
Climb to 4600 direct MILCY and hold.

ASOS 118.525	KANSAS CITY CENTER 125.2 269.4	UNICOM 122.7 (CTAF) 0
------------------------	--	---------------------------------



4600

↑

MILCY

✧

CINOS

3900

CORKU

5 NM Holding Pattern

*LNAV only.

*0.9 NM to RW32

RW32

3900

326°

146°

326°

4600

GP 3.00°

TCH 40

0.9 NM

3.1 NM

7 NM

CATEGORY	A	B	C	D
LPV DA		2791-¾	200 (200-¾)	
LNAV/VNAV DA		2841-⅞	250 (300-⅞)	
LNAV MDA		2920-1	329 (400-1)	
CIRCLING	3040-1 444 (500-1)	3080-1 484 (500-1)	3320-2 724 (800-2)	3320-2¼ 724 (800-2¼)