

WAAS CH 99704 W35A	APP CRS 347°	Rwy Idg TDZE 1864 Apt Elev 1864	5000
--	------------------------	---	-------------

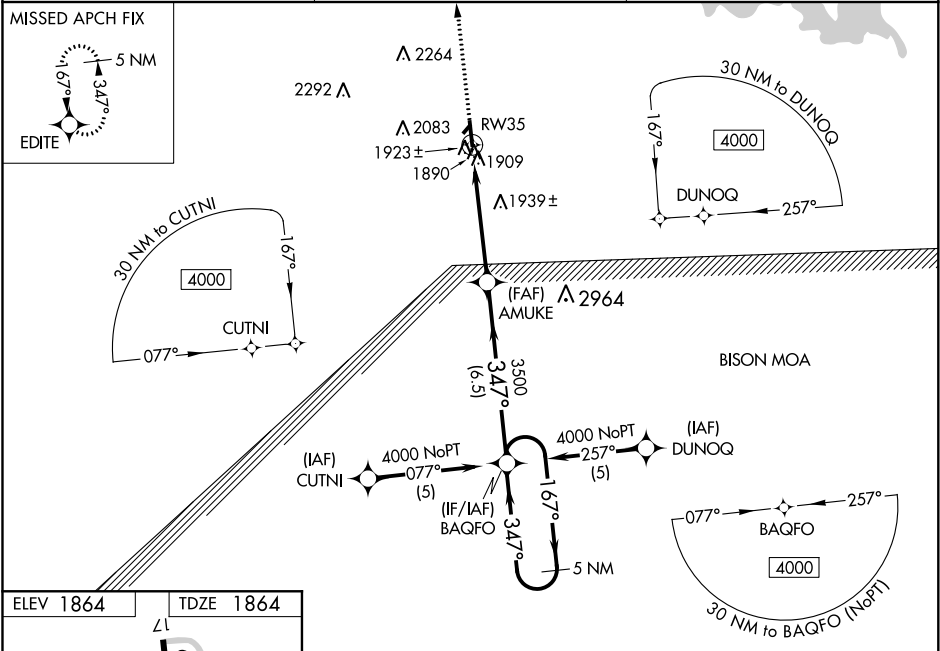
RNAV (GPS) RWY 35

RUSSELL MUNI (RSL)

Baro-VNAV NA when using Hays altimeter setting. For uncompensated Baro-VNAV systems, LNAV/VNAV NA below -18°C (0°F) or above 54°C (130°F). DME/DME RNP-0.3 NA. VDP NA when using Hays altimeter setting. When local altimeter setting not received, use Hays altimeter setting: increase LPV all Cats DA to 2187 feet, LNAV/VNAV all Cats DA to 2267 feet and all visibilities ¼ mile; increase all MDA 80 feet and LNAV Cat C visibility ⅓ mile. Circling NA to Rwys 3 and 21.

MISSED APPROACH: Climb to 4000 direct EDITE and hold.

ASOS 128.325	KANSAS CITY CENTER 124.4 322.4	UNICOM 122.7 (CTAF) 1
------------------------	--	---------------------------------



ELEV 1864	TDZE 1864	<div><div>4000</div><div>EDITE</div><div>VGSI and RNAV glidepath not coincident (VGSI Angle 3.00/TCH 40).</div><div>5 NM Holding Pattern</div></div>			
<div><div>1802 x 300</div><div>5000 x 75</div><div>1898 A</div><div>35</div><div>347° to RW35</div></div>		<div><div>*LNAV only.</div><div>*0.9 NM to RW35</div><div>AMUKE</div><div>347°</div><div>3500</div><div>0.9 NM</div><div>4.1 NM</div><div>6.5 NM</div></div>			
CATEGORY		A	B	C	D
LPV DA		2118-1 254 (300-1)			NA
LNAV/VNAV DA		2198-1½ 334 (400-1½)			NA
LNAV MDA		2200-1 336 (400-1)			NA
CIRCLING		2240-1 376 (400-1)	2320-1 456 (500-1)	2320-1½ 456 (500-1½)	NA