

19339

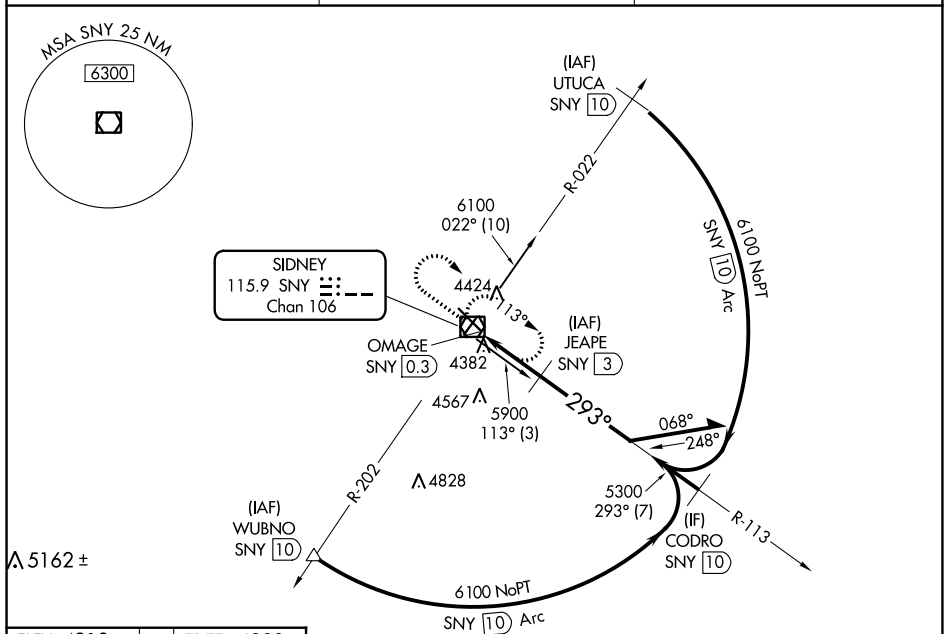
VOR/DME SNY 115.9 Chan 106	APP CRS 293°	Rwy Idg 6600 TDZE 4290 Apt Elev 4313
--	------------------------	---

VOR/DME RWY 31
SIDNEY MUNI/LLOYD W CARR FIELD (SNY)

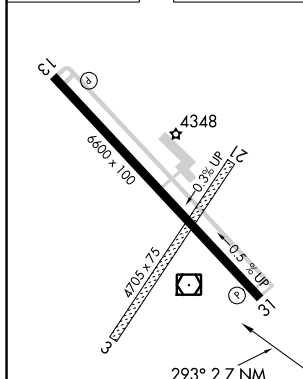
T When local altimeter setting not received, use Kimball
A altimeter setting and increase all MDA 160 feet and
increase S-31 Cat C and D visibility ½ mile. VDP NA
when using Kimball altimeter setting.

MISSED APPROACH: Climb to 6100 then right turn direct SNY VOR/DME and hold.

ASOS 125,775	DENVER CENTER 118,475 225.4	UNICOM 122.8 (CTAF) 0
------------------------	---------------------------------------	---------------------------------

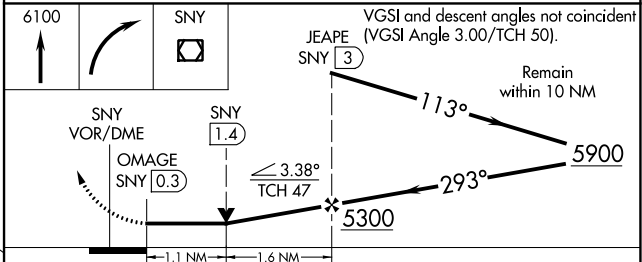


ELEV 4313		TDZE 4290
-----------	--	-----------



REIL Rwy 13 and 31 L

HIRE Rwy 13-31 L



CATEGORY	A	B	C	D
S-31	4680-1 390 (400-1)			4680-1¼ 390 (400-1¼)
CIRCLING	4760-1 447 (500-1)	4780-1 467 (500-1)	4780-1½ 467 (500-1½)	4880-2 567 (600-2)

SIDNEY, NEBRASKA

Amdt 5B 15SEP16

SIDNEY MUNI/LLOYD W CARR FIELD (SNY)

41°06'N-102°59'W

VOR/DME RWY 31

NC-2, 31 DEC 2020 to 28 JAN 2021