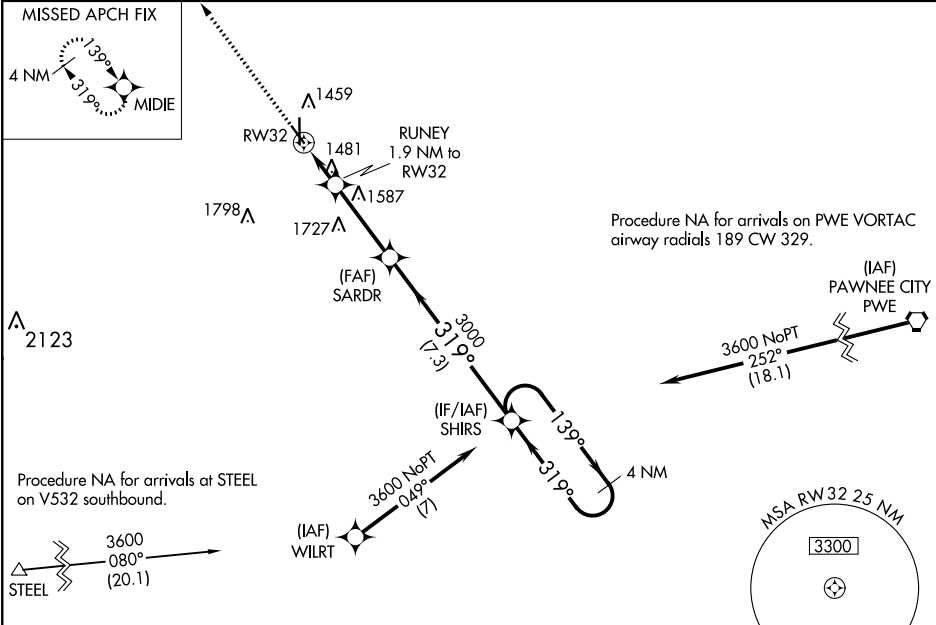


WAAS CH 58320 W32A	APP CRS 319°	Rwy Idg TDZE Apt Elev	4401 1312 1324
--	------------------------	-----------------------------	---

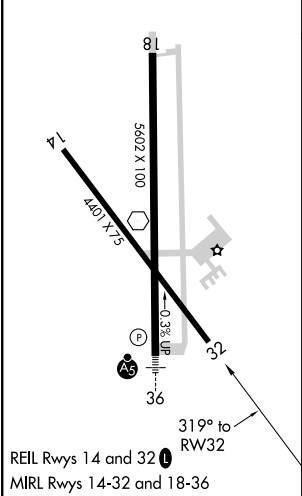
RNAV (GPS) RWY 32
BEATRICE MUNI (BIE)

<p>▼ For uncompensated Baro-VNAV systems, LNAV/VNAV NA below -22°C (-7°F) or above 54°C (130°F). ▲ DME/DME RNP-0.3 NA. Rwy 32 helicopter visibility reduction below ¾ SM NA.</p>	MISSED APPROACH: Climb to 3600 direct MIDIE and hold.
--	---

AWOS-3 125.325	MINNEAPOLIS CENTER 126.4 317.7	UNICOM 122.8 (CTAF) 0
--------------------------	--	---------------------------------



ELEV 1324	D	TDZE 1312
-----------	----------	-----------



3600

↑

MIDIE

✳

*LNAV only

RW32

1.2 NM

1.2 NM to RW32

0.7

1940*

3.3 NM

7.3 NM

3000

319°

3000

319°

3600

139°

3600

4 NM Holding Pattern

SHIRS

RUNNEY

1.9 NM to RW32

SARDR

3000

GP 3.00°

TCH 45

CATEGORY	A	B	C	D
LPV DA	1562-1 250 (300-1)			
LNAV/VNAV DA	1685-1¼ 373 (400-1¼)			
LNAV MDA	1740-1	428 (500-1)	1740-1¼	428 (500-1¼)
CIRCLING	1820-1	496 (500-1)	2000-2 676 (700-2)	2100-2½ 776 (800-2½)

NC-2, 31 DEC 2020 to 28 JAN 2021

NC-2, 31 DEC 2020 to 28 JAN 2021