

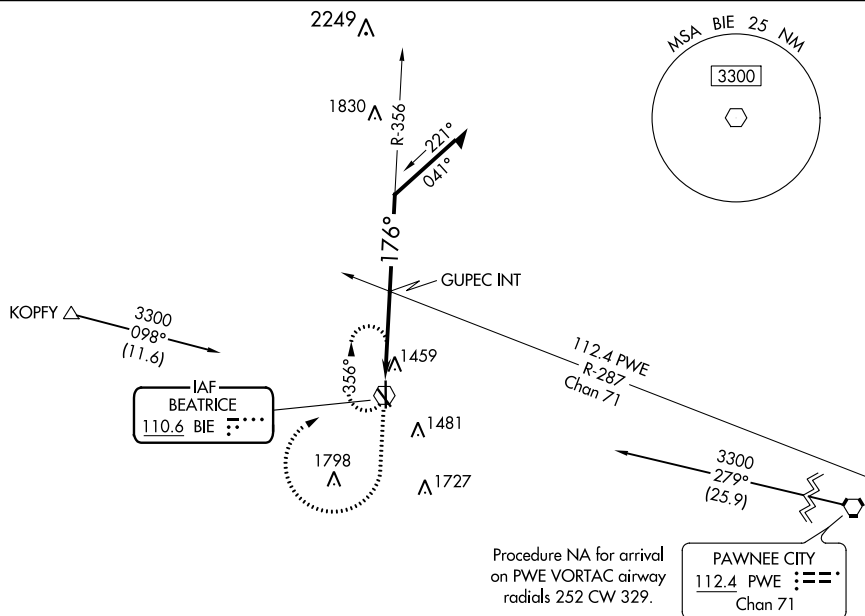
VOR BIE <u>110.6</u>	APP CRS 176°	Rwy Idg 5602 TDZE 1324 Apt Elev 1324
--------------------------------	------------------------	---

VOR RWY 18
BEATRICE MUNI (BIE)

A Rwy 18 helicopter visibility reduction below $\frac{3}{4}$ SM NA.

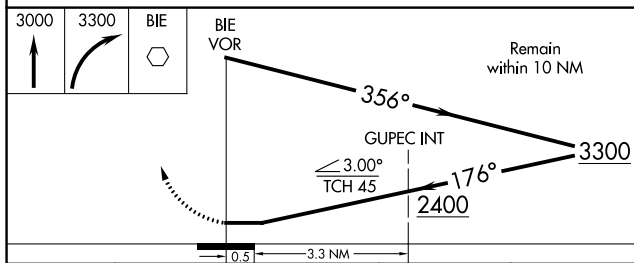
MISSED APPROACH: Climb to 3000 then climbing right turn to 3300 direct BIE VOR and hold.



AWOS-3 125.325	MINNEAPOLIS CENTER 126.4 317.7	UNICOM 122.8 (CTAF) 0
--------------------------	--	---------------------------------

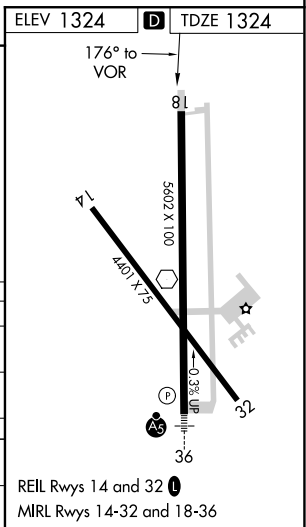


Procedure NA for arrival
on PWE VORTAC airway
radials 252 CW 329.

PAWNEE CITY
112.4 PWE :==
Chan 71



CATEGORY	A	B	C	D
S-18	2400-1¼ 1076 (1100-1¼)	2400-1½ 1076 (1100-1½)	2400-3	1076 (1100-3)
 CIRCLING	2400-1¼ 1076 (1100-1¼)	2400-1½ 1076 (1100-1½)	2400-3	1076 (1100-3)
GUPEC FIX MINIMUMS (DUAL VOR RECEIVERS REQUIRED)				
S-18	1760-1	436 (500-1)	1760-1¼	436 (500-1¼)
 CIRCLING	1820-1	496 (500-1)	2000-2 676 (700-2)	2100-2½ 776 (800-2½)



BEATRICE MUNI (BIE)
VOR RWY 18