

WAAS CH <b>65929</b> <b>W01B</b>	APP CRS <b>016°</b>	Rwy Idg <b>7301</b> TDZE <b>1321</b> Apt Elev <b>1333</b>
--	------------------------	---

## RNAV (GPS) RWY 1R

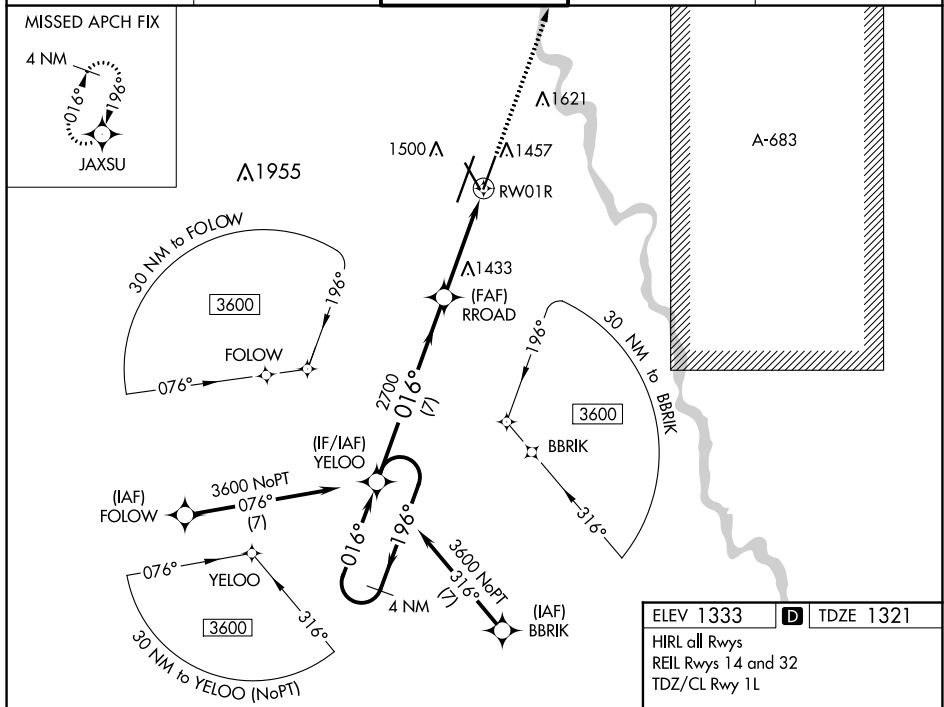
WICHITA DWIGHT D EISENHOWER NATIONAL (ICT)

**⚠** For uncompensated Baro-VNAV systems, LNAV/VNAV NA below -15°C (5°F) or above 54°C (130°F). For inoperative MALSR, increase LPV Cat E visibility to ¾, LNAV/VNAV Cat E visibility to 1½ and LNAV Cat C, D and E visibility to 1½. DME/DME RNP-0.3 NA. LNAV procedure NA during simultaneous operations. Simultaneous approach authorized with ILS or LOC RWY 1L and ILS RWY 1L (CAT II). Use of FD or AP providing RNAV track guidance required during simultaneous operations. # RVR 1800 authorized with use of FD or AP or HUD to DA.

MALSR

**MISSED APPROACH:**  
Climb to 3600 direct  
JAXSU and hold

ATIS 125.15	WICHITA APP CON 126.7 353.5	WICHITA TOWER 118.2 257.8	GND CON 121.9 348.6	CLNC DEL 125.7
----------------	--------------------------------	------------------------------	------------------------	-------------------



ELEV 1333	<b>D</b>	TDZE 1321
-----------	----------	-----------

HIRL all Rwy's  
REIL Rwy's 14 and 32  
TDZ/CL Rwy 1L

