

WICHITA, KANSAS

AL-987 (FAA)

19115

WAAS CH 49119 W19B	APP CRS 196°	Rwy Idg TDZE Apt Elev	7301 1320 1333
--	------------------------	-----------------------------	---

RNAV (GPS) Y RWY 19L

WICHITA DWIGHT D EISENHOWER NATIONAL (ICT)

RNP APCH.

T For uncompensated Baro-VNAV systems, LNAV/VNAV NA below -15°C (5°F) or above 54°C (130°F). Simultaneous approach authorized with ILS or LOC RWY 19R. LNAV procedure NA during simultaneous operations. Use of FD or AP providing RNAV track guidance required during simultaneous operations.

MALSR

MISSED APPROACH:
Climb to 3600 direct
YFLOO and hold.

ATIS 125.15	WICHITA APP CON 126.7 353.5	WICHITA TOWER 118.2 257.8	GND CON 121.9 348.6	CLNC DEL 125.7
----------------	--------------------------------	------------------------------	------------------------	-------------------

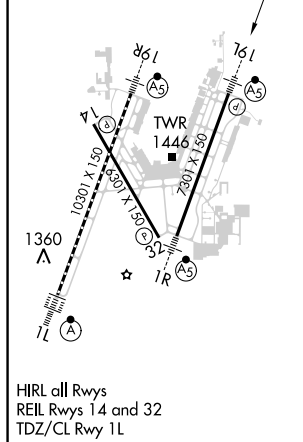
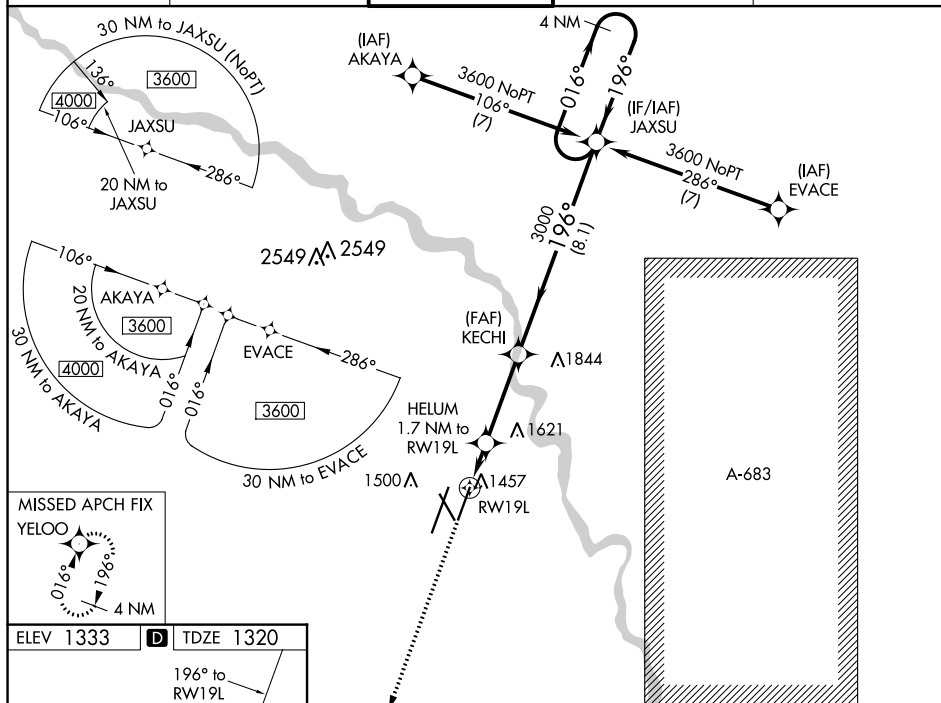


Diagram illustrating a flight path for a Circling Approach to RW19L. The path starts at 3600 MSL, descends to 3000 MSL, and then turns right to 016° to descend to 1900* MSL. Key waypoints include YELOO, HELUM (1.7 NM to RW19L), KECHI (3000 MSL), and JAXSU (4 NM Holding Pattern). The final approach is to RW19L, which is 1.1 NM from the 1900* MSL point. The diagram also shows a 4 NM Holding Pattern and a 4 NM Holding Pattern.

CATEGORY	A	B	C	D
LPV DA	1520- $\frac{1}{2}$	200 (200- $\frac{1}{2}$)		
RNAV/ VNAV DA	1747- $\frac{3}{4}$	427 (500- $\frac{3}{4}$)		
RNAV MDA	1780- $\frac{1}{2}$	460 (500- $\frac{1}{2}$)	1780- $\frac{7}{8}$	460 (500- $\frac{7}{8}$)
C CIRCLING	1800-1	467 (500-1)	1980- $\frac{13}{4}$ 647 (700- $\frac{13}{4}$)	1980-2 647 (700-2)

WICHITA, KANSAS
Amdt 2A 24MAY18

WICHITA DWIGHT D EISENHOWER NATIONAL (ICT)

37°39'N-97°26'W

RNAV (GPS) Y RWY 19L

NC-2, 31 DEC 2020 to 28 JAN 2021

NC-2, 31 DEC 2020 to 28 JAN 2021