

WAAS CH 45931 W19A	APP CRS 188°	Rwy Idg TDZE 1409 Apt Elev 1409
--	------------------------	---

RNAV (GPS) RWY 19

BEECH FACTORY (BEC)

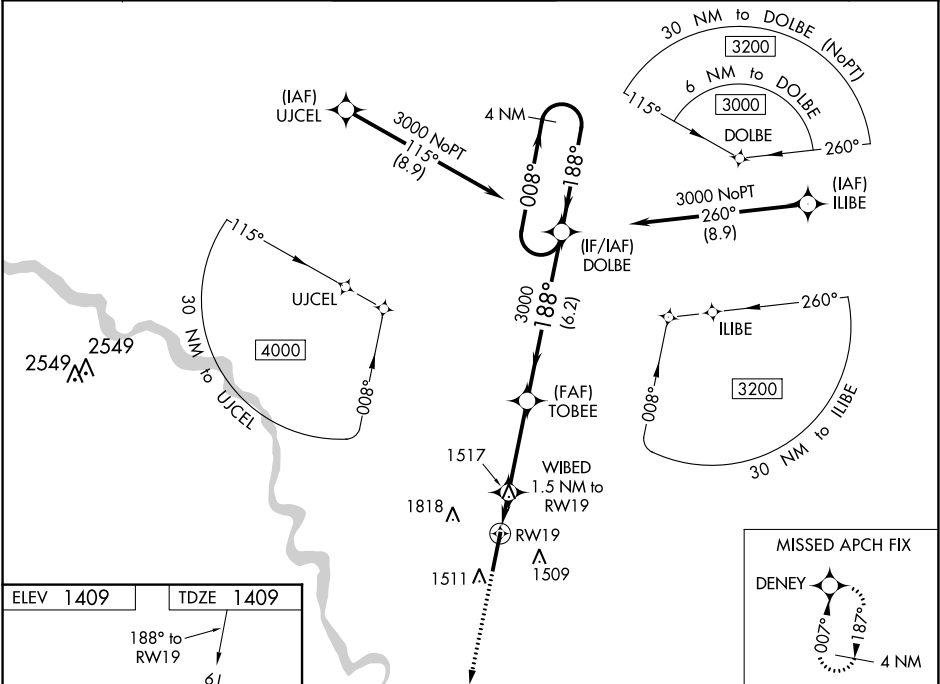
⚠

NA

For uncompensated Baro-VNAV systems, LNAV/VNAV NA below -17°C (2°F) or above 54°C (130°F). DME/DME RNP-0.3 NA. Obtain local altimeter setting on CTAF; when not received, use Wichita Dwight D Eisenhower National altimeter setting and increase all DA 36 feet and all MDA 40 feet; increase LPV all Cats and LNAV/VNAV all Cats visibility and LNAV Cat C and D visibility 1/8 mile and Circling Cat C and D visibility 1/4 mile. Baro-VNAV NA with Wichita Dwight D Eisenhower National altimeter setting. Helicopter visibility reduction below 3/4 SM NA.

MISSED APPROACH:
Climb to 3000 direct DENEY and hold.

AWOS-3PT 119.45	WICHITA APP CON 134.8 269.1	BEECH TOWER ★ 126.8 (CTAF) 0 313.6	GND CON 121.7	CLNC DEL 125.0 (When tower closed)	UNICOM 122.95
---------------------------	---------------------------------------	--	-------------------------	---	-------------------------



ELEV 1409	TDZE 1409
------------------	------------------

The inset chart shows the approach path and surrounding terrain. Key features include:

- Altitudes:** 188° to RWY 19, 1450 ft, 1446 ft.
- Navigation Aids:** TWR 1437, 1446 ft.
- Obstacles:** 188° to RWY 19, 1450 ft, 1446 ft.

MIRL Rwy 1-19
REIL Rwy 1 and 19

3000	DENEY	TOBEE	DOLBE	4 NM Holding Pattern
*LNAV only	WIBED 1.5 NM to RWY 19	3000	188°	008°
1920*	1.5 NM	3.4 NM	6.2 NM	GP 3.00° TCH 45
CATEGORY	A	B	C	D
LPV DA	1659-3/4	250 (300-3/4)		
LNAV/VNAV DA	1659-3/4	250 (300-3/4)		
LNAV MDA	1780-1	371 (400-1)		
CIRCLING	1820-1 411 (500-1)	2120-1 711 (800-1)	2120-2 711 (800-2)	2120-2 1/4 711 (800-2 1/4)

NC-2, 31 DEC 2020 to 28 JAN 2021

NC-2, 31 DEC 2020 to 28 JAN 2021