

WICHITA, KANSAS

AL-5141 (FAA)

20310

VORTAC ICT 113.8 Chan 85	APP CRS 275°	Rwy Idg TDZE Apt Elev 1409	N/A N/A
--	------------------------	---	--------------------------

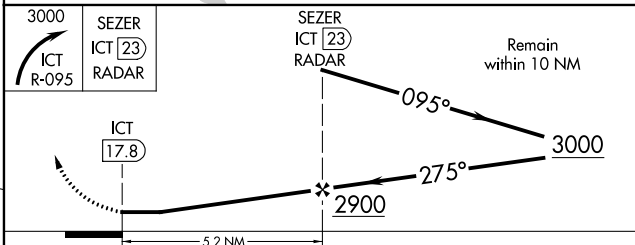
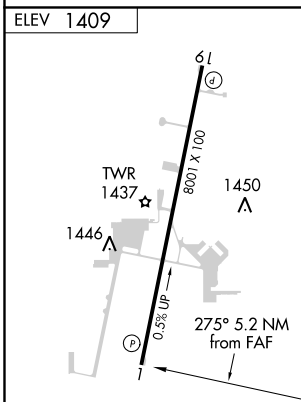
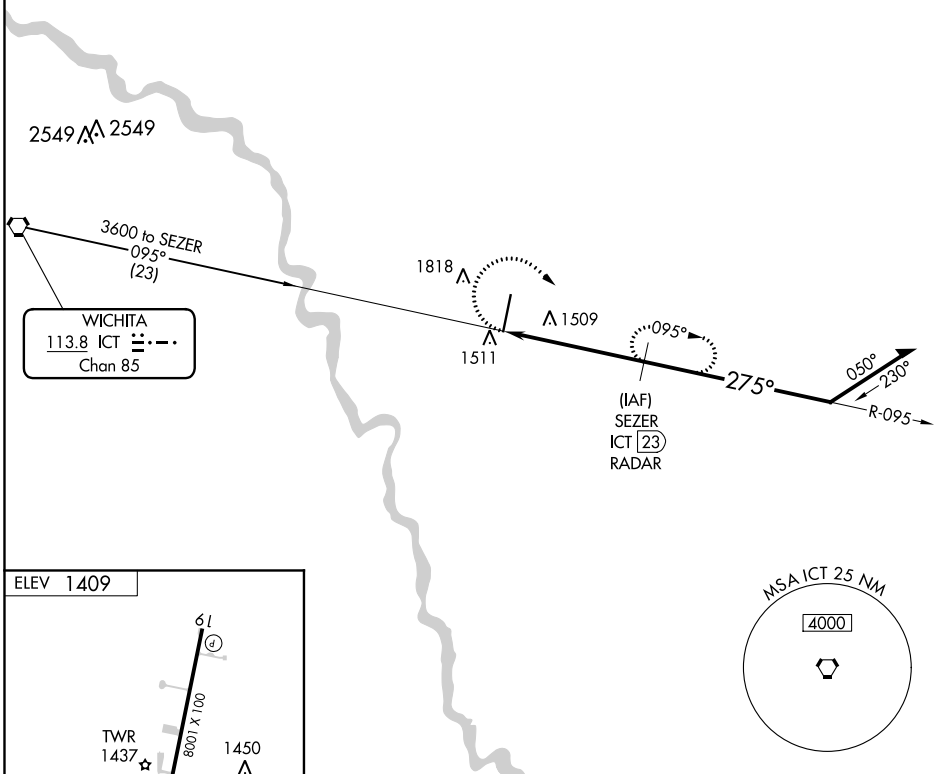
VOR-B
BEECH FACTORY (BEC)


NA Obtain local altimeter setting on CTAF; when not received, use Wichita Dwight D Eisenhower National altimeter setting and increase all MDA 40 feet and increase Cat C and D visibility $\frac{1}{4}$ mile.

MISSED APPROACH: Climbing right turn to 3000 on ICT VORTAC R-095 to SEZER/ICT 23 DME/RADAR and hold.

AWOS-3PT 119.45	WICHITA APP CON 134.8 269.1	BEECH TOWER ★ 126.8 (CTAF) 0 313.6	GND CON 121.7	CLNC DEL 125.0 (When tower closed)	UNICOM 122.95
---------------------------	---------------------------------------	--	-------------------------	---	-------------------------

RADAR or DME REQUIRED



FAF to MAP 5.2 NM						CATEGORY	A	B	C	D
Knots	60	90	120	150	180	 CIRCLING	1840-1	2120-1	2120-2	2120-2½
Min:Sec	5:12	3:28	2:36	2:05	1:44		431 (500-1)	711 (800-1)	711 (800-2)	711 (800-2½)

WICHITA, KANSAS
Amdt 4 25JUL13

37°42'N-97°13'W

BEECH FACTORY (BEC)
VOR-B