

LOC I-MHK 111.3	APP CRS 036°	Rwy Idg TDZE Apt Elev	7000 1056 1066
---------------------------	------------------------	-----------------------------	---

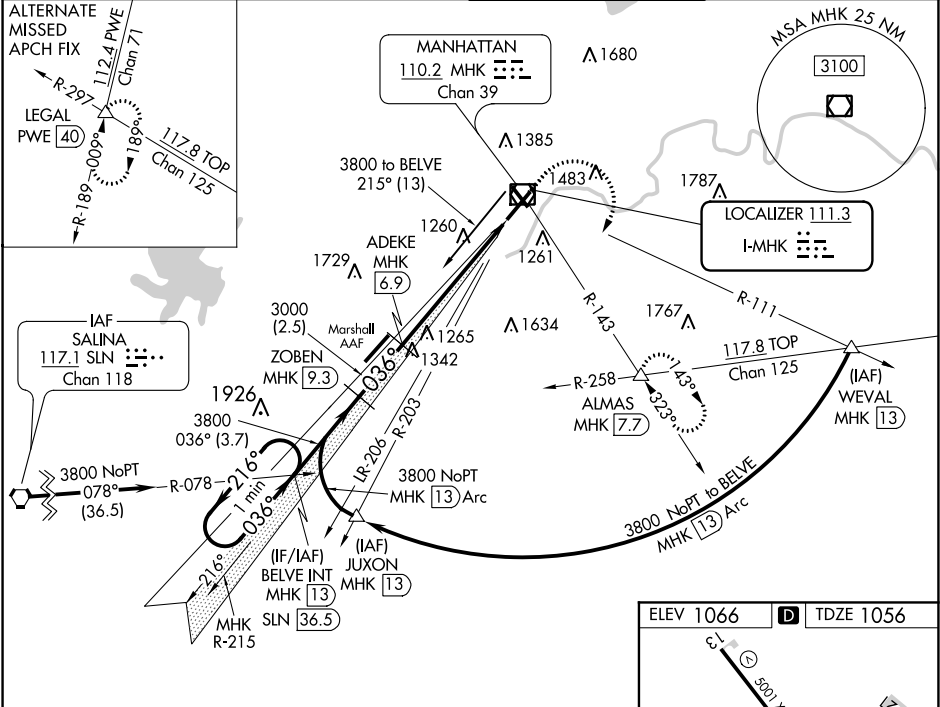
ILS or LOC RWY 3
MANHATTAN RGNL (MHK)

⚠ For inop MALSRL when using Marshall AAF altimeter setting, increase S-ILS 3 all Cats visibility to 1 1/4 mile. Circling NA west of Rwy 3-21. Helicopter visibility reduction below 3/4 SM NA. When local altimeter setting not received, use Marshall AAF altimeter setting and increase all DA 16 feet and all MDA 20 feet. For inop MALSRL, increase S-LOC 3 Cats A/B visibility 1/4 mile. Inop table does not apply to S-ILS 3. DME Required.

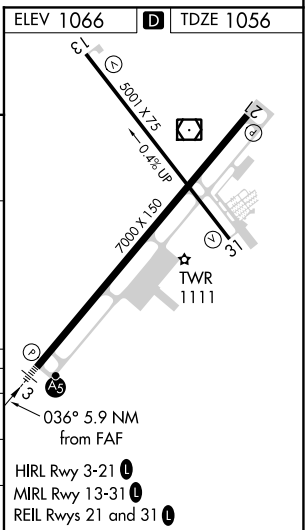
MALSRL
AS

⚠ MISSED APPROACH: Climb to 2000 then climbing right turn to 3000 via MHK VOR/DME R-143 to ALMAS INT/MHK 7.7 DME and hold.

ASOS 119.075	MARSHALL GCA* 121.25 254.35	MANHATTAN TOWER* 118.55 (CTAF) 0	GND CON 121.85
------------------------	---------------------------------------	--	--------------------------



VGSI and ILS glidepath not coincident (VGSI Angle 3.00/TCH 50).			
One Minute Holding Pattern	BELVE INT MHK 13	ZOBEN MHK 9.3	ADEKE MHK 6.9
3800 ← 216°	036° →	036° →	3000
GS 3.00° TCH 46	3.7 NM	2.5	5.9 NM
CATEGORY	A	B	C
S-ILS 3	1256-3/4 200 (200-3/4)		
S-LOC 3	1520-3/4	464 (500-3/4)	1520-1 464 (500-1)
CIRCLING	1600-1 534 (600-1)	1700-1 634 (700-1)	1700-1 3/4 634 (700-1 3/4)



NC-2, 31 DEC 2020 to 28 JAN 2021

NC-2, 31 DEC 2020 to 28 JAN 2021