

LOC/DME I-MCK <b>110.95</b> Chan <b>46</b> (Y)	APP CRS <b>123°</b>	Rwy Idg <b>5698</b> TDZE <b>2583</b> Apt Elev <b>2583</b>
--	------------------------	---

ILS or LOC/DME RWY 12

MC COOK BEN NELSON RGNL (MCK)

▼

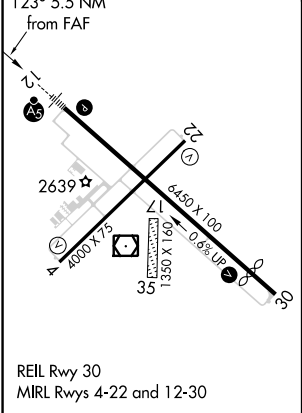
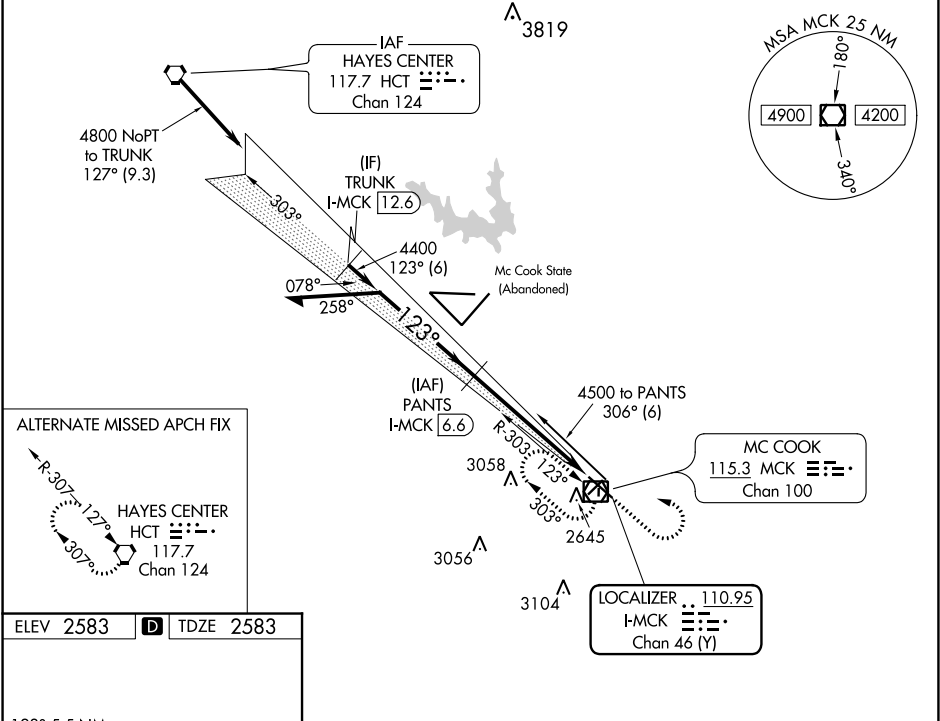
▲

Circling NA to Rwy 17 and 35. When local altimeter setting not received, use Imperial Muni altimeter setting and increase DA 213 feet and S-ILS 12 all visibilities ½ mile; increase all MDAs 220 feet and S-LOC 12 and Circling visibilities Cats A and B ¼ mile, Cat C 1 mile. VDP NA when using Imperial Muni altimeter setting. For inoperative MALSR, when using Imperial Muni altimeter setting increase S-ILS 12 all visibilities to 1½, and S-LOC 12 Cat A visibility to 1.

MALSR

MISSED APPROACH: Climb to 4500 then climbing left turn to 5000 direct MCK VOR/DME and hold.

ASOS <b>119.025</b>	DENVER CENTER <b>132.7 226.675</b>	UNICOM <b>122.8</b> (CTAF) <b>0</b>
------------------------	---------------------------------------	--



Remain within 10 NM		4500	5000	MCK
303°		4400	I-MCK 2.9	I-MCK 1.1
123°		4400		
GS 3.00°				
TCH 39				
		3.7 NM	1.8 NM	
CATEGORY	A	B	C	D
S-ILS 12	2783-½ 200 (200-½)			NA
S-LOC 12	3180-½	597 (600-½)	3180-1 597 (600-1)	NA
CIRCLING	3180-1	597 (600-1)	3180-1½ 597 (600-1½)	NA