

VOR/DME MCK 115.3 Chan 100	APP CRS 294°	Rwy Idg TDZE Apt Elev	5698 2558 2583
--	------------------------	-----------------------------	---

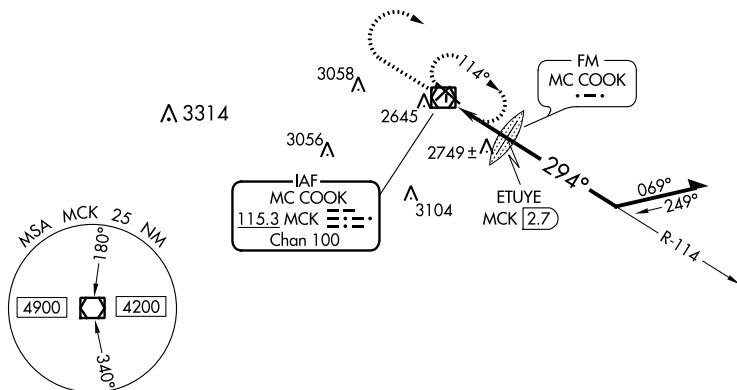
VOR RWY 30

MC COOK BEN NELSON RGNL (MCK)

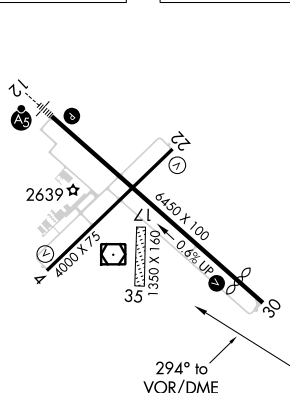
- T** VDP NA when using Imperial Muni altimeter setting. When local altimeter setting not received, use Imperial Muni altimeter setting and increase all MDA 220 feet, and Cat B visibility $\frac{1}{4}$ mile, Cat C $\frac{3}{4}$ and ETUYE fix minimums Cat C $\frac{1}{2}$ mile. Circling NA to Rwys 17 and 35.

MISSED APPROACH: Climb to 4500 then climbing right turn to 5000 direct MCK VOR/DME and hold.

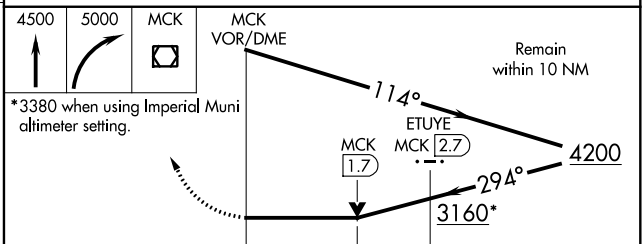
ASOS 119.025	DENVER CENTER 132.7 226.675	UNICOM 122.8 (CTAF) 0
------------------------	---------------------------------------	---------------------------------



ELEV 2583	D	TDZE 2558
-----------	----------	-----------



REIL Rwy 30
MIRL Rwy 4-22 and 12-30



<div style="display: flex; justify-content: space-around; align-items: center;"> <div style="border: 1px solid black; padding: 2px 5px;">1.3 NM</div> <div style="border: 1px solid black; padding: 2px 5px;">1 NM</div> </div>				
CATEGORY	A	B	C	D
S-30	3160-1	602 (600-1)	3160-1 $\frac{3}{4}$ 602 (600-1 $\frac{3}{4}$)	NA
CIRCLING	3160-1	577 (600-1)	3160-1 $\frac{3}{4}$ 577 (600-1 $\frac{3}{4}$)	NA
ETUPE FIX MINIMUMS (DME or FM REQUIRED)				
S-30	3000-1	442 (500-1)	3000-1 $\frac{3}{8}$ 442 (500-1 $\frac{3}{8}$)	NA
CIRCLING	3020-1 437 (500-1)	3040-1 457 (500-1)	3040-1 $\frac{1}{2}$ 457 (500-1 $\frac{1}{2}$)	NA

VOR RWY 30