

WAAS CH <b>99619</b> <b>W16A</b>	APP CRS <b>159°</b>	Rwy Idg TDZE Apt Elev	<b>6501</b> <b>1999</b> <b>1999</b>
--	------------------------	-----------------------------	---

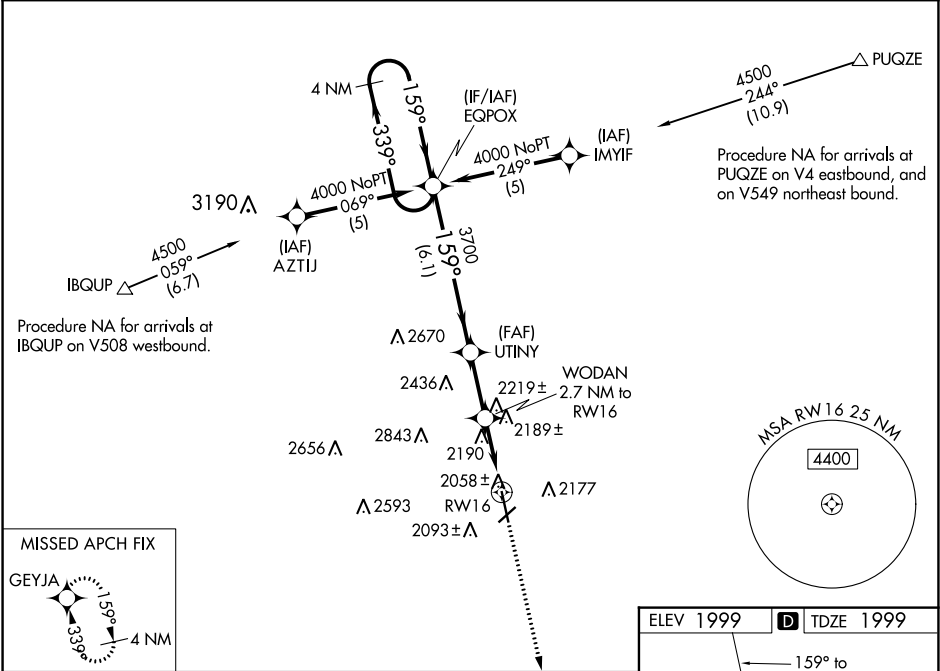
RNAV (GPS) RWY 16

HAYS RGNL (HYS)

**⚠** For uncompensated Baro-VNAV systems, LNAV/VNAV NA below -18°C (0°F) or above 45°C (113°F). DME/DME RNP-0.3 NA. Visibility reduction by helicopters NA. When local altimeter setting not received, use Russell altimeter setting and increase LPV DA to 2318, LNAV/VNAV DA to 2445, and all MDA 80 feet, increase LNAV/VNAV all Cats visibility ½ mile and LNAV Cat C and D visibility ¼ mile. Baro-VNAV NA when using Russell altimeter setting.

**MISSED APPROACH:**  
Climb to 4000 direct GEYJA and hold.

AWOS-3PT <b>125.525</b>	KANSAS CITY CENTER <b>124.4 322.4</b>	UNICOM <b>122.8 (CTAF) 1</b>
----------------------------	--	---------------------------------



4 NM Holding Pattern				
EQPOX				
4000 ← 339° 159° →				
GP 3.00° TCH 43				
3700				
6.1 NM				
2.4 NM				
2.7 NM				
CATEGORY	A	B	C	D
LPV DA	2249-1		250 (300-1)	
LNAV/VNAV DA	2308-1		309 (400-1)	
LNAV MDA	2440-1	441 (500-1)	2440-1¼ 441 (500-1¼)	2440-1½ 441 (500-1½)
CIRCLING	2440-1 441 (500-1)	2480-1 481 (500-1)	2480-1½ 481 (500-1½)	2560-2 561 (600-2)

