

| | | |
|--|------------------------|---|
| VORTAC HYS 110.4 Chan 41 | APP CRS 332° | Rwy Idg TDZE 1994 Apt Elev 1999 |
|--|------------------------|---|

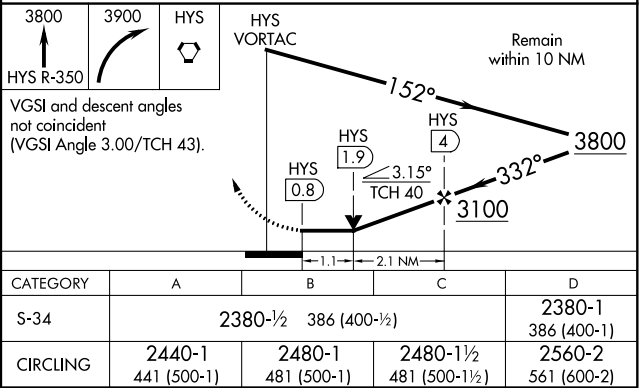
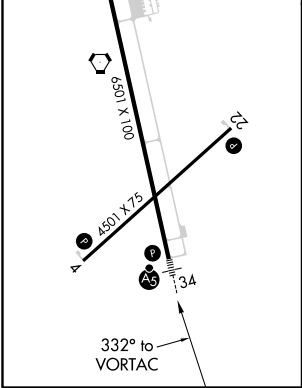
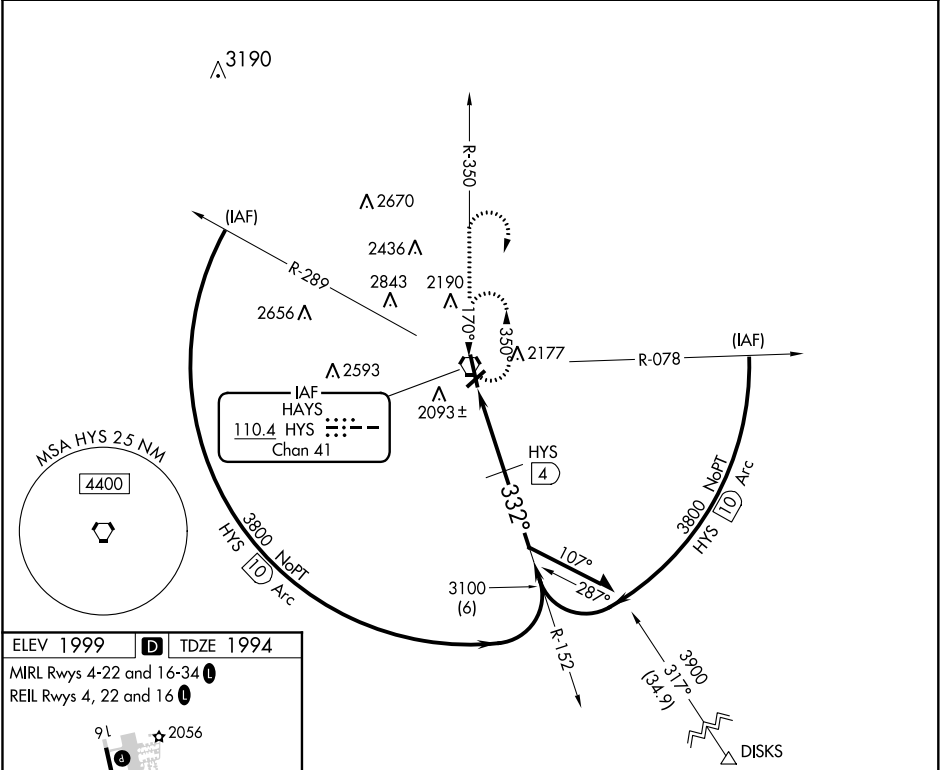
VOR/DME RWY 34
HAYS RGNL (HYS)

When local altimeter setting not received, use Russell altimeter setting and increase all MDA 80 feet, increase S-34 Cat C visibility ¼ mile. VDP NA with Russell altimeter setting. For inop MALS, increase S-34 Cat D visibility to 1 ½ mile.

MALS

MISSED APPROACH: Climb to 3800 via HYS R-350 then climbing right turn to 3900 direct HYS VORTAC and hold.

| | | |
|----------------------------|--|---------------------------------|
| AWOS-3PT 125.525 | KANSAS CITY CENTER 124.4 322.4 | UNICOM 122.8 (CTAF) 0 |
|----------------------------|--|---------------------------------|



NC-2, 31 DEC 2020 to 28 JAN 2021

NC-2, 31 DEC 2020 to 28 JAN 2021