

WAAS
CH **90203**
W13A

APP CRS
130°

Rwy Idg
TDZE
Apt Elev
4408
2032
2034

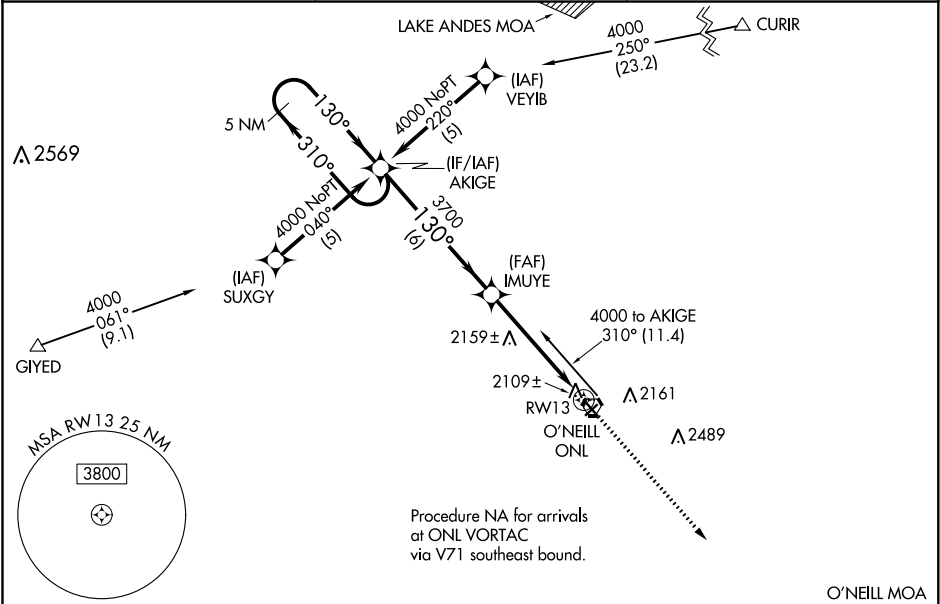
RNAV (GPS) RWY 13

THE O'NEILL MUNI-JOHN L BAKER FIELD (ONL)

⚠ Baro-VNAV NA when using Evelyn Sharp Field altimeter setting. For uncompensated Baro-VNAV systems, LNAV/VNAV NA below -19°C (-2°F) or above 54°C (130°F). DME/DME RNP-0.3 NA. Helicopter visibility reduction below ¾ SM NA. If local altimeter setting not received, use Evelyn Sharp Field altimeter setting and increase all DAs 126 feet, all MDAs 140 feet. VDP NA when using Evelyn Sharp Field altimeter setting. Night landing: Rwy 4, 22 NA.

MISSED APPROACH:
Climb to 4000 direct
AFSIC and hold.

AWOS-3 121.125	MINNEAPOLIS CENTER 128.0 257.95	UNICOM 122.8 (CTAF) 0
--------------------------	---	---------------------------------



ELEV 2034

TDZE 2032

REIL Rws 13 and 31

MRL Rwy 13-31

CATEGORY	A	B	C	D
LPV DA	2308-1	276 (300-1)		NA
LNAV/VNAV DA	2380-1¼	348 (400-1¼)		NA
LNAV MDA	2420-1	388 (400-1)		NA
CIRCLING	2600-1	566 (600-1)	2600-1½ 566 (600-1½)	NA