

WAAS CH 70503 W31A	APP CRS 310°	Rwy Idg TDZE Apt Elev 4408 2032 2034
--	------------------------	--

RNAV (GPS) RWY 31

THE O'NEILL MUNI-JOHN L BAKER FIELD (ONL)

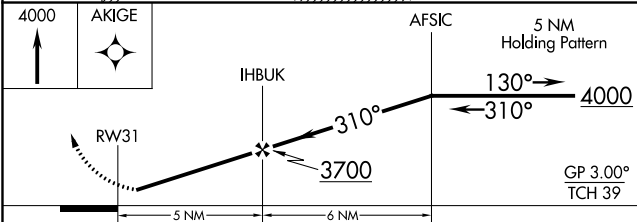
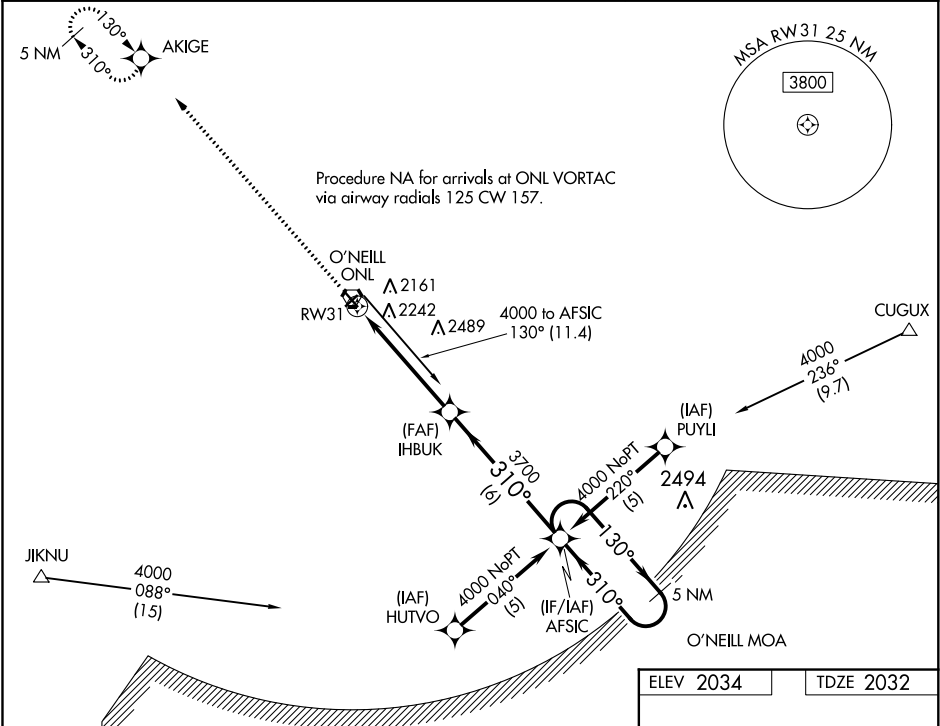
▼

▲

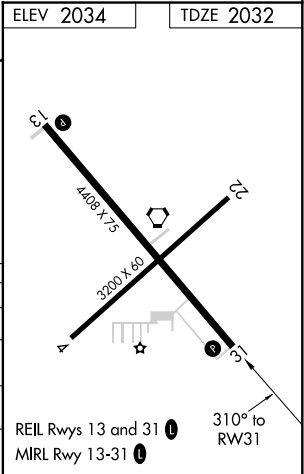
If local altimeter setting not received, use Evelyn Sharp Field altimeter setting and increase all DAs 126 feet, all MDAs 140 feet. Baro-VNAV NA when using Evelyn Sharp Field altimeter setting. For uncompensated Baro-VNAV systems, LNAV/VNAV NA below -19°C (-2°F) or above 54°C (130°F). DME/DME RNP-0.3 NA. Helicopter visibility reduction below 1 SM NA. Night landing: Rwy 4, 22 NA.

MISSED APPROACH: Climb to 4000 direct AKIGE and hold.

AWOS-3 121.125	MINNEAPOLIS CENTER 128.0 257.95	UNICOM 122.8 (CTAF) 0
--------------------------	---	---------------------------------



CATEGORY	A	B	C	D
LPV DA	2282-1	250 (300-1)		NA
LNAV/VNAV DA	2601-2	569 (600-2)		NA
LNAV MDA	2580-1	548 (600-1)	2580-1½ 548 (600-1½)	NA
CIRCLING	2600-1	566 (600-1)	2600-1½ 566 (600-1½)	NA



NC-2, 31 DEC 2020 to 28 JAN 2021

NC-2, 31 DEC 2020 to 28 JAN 2021