

LOC I-CAC 111.7	APP CRS 174°	Rwy Idg TDZE 1530 Apt Elev 1533
---------------------------	------------------------	---

ILS or LOC RWY 17
NEWTON-CITY-COUNTY (E WK)

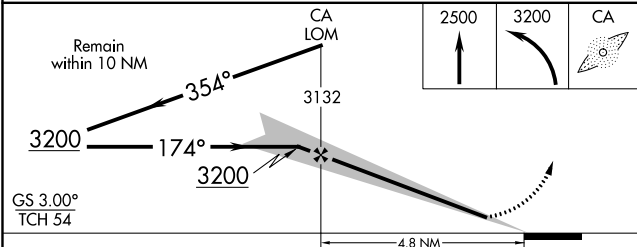
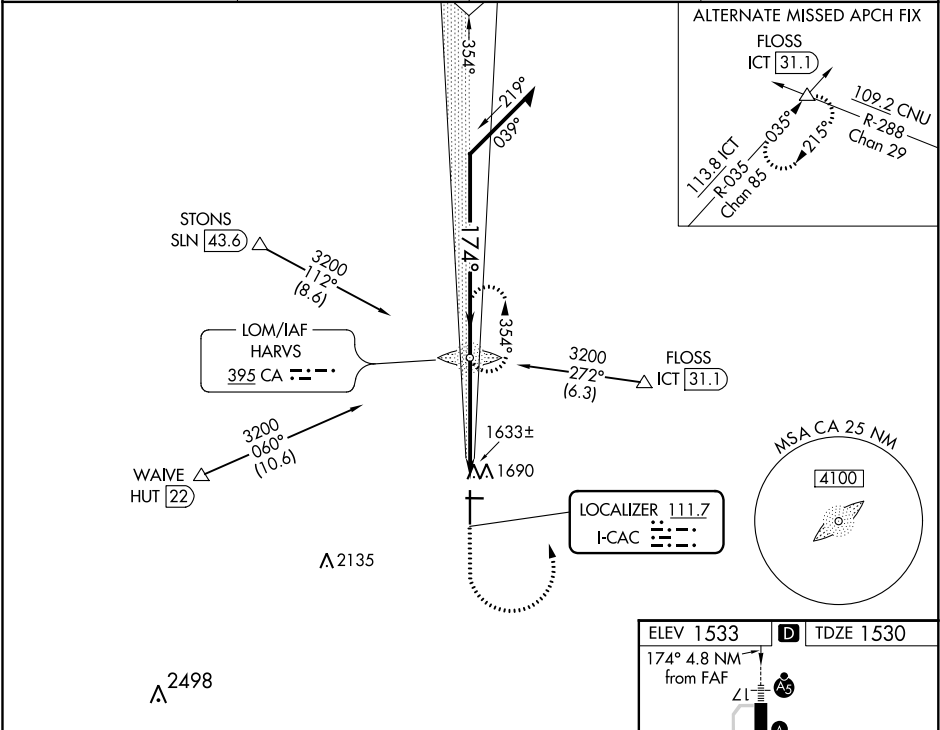
ADF required for Procedure entry. ADF required.

When local altimeter setting not received, use Wichita Dwight D Eisenhower National altimeter setting: increase S-ILS 17 to 1830 feet; increase all MDAs 100 feet and visibility S-LOC 17 Cat C% SM and S-LOC 17 Cat D 1/4 SM. For inop ALS, increase S-LOC 17 Cat C/D visibility to 1 SM. Circling Rwy 8, 26 NA at night. For inop ALS when using Wichita Dwight D Eisenhower National altimeter setting, increase S-ILS 17 visibility to 7/8 SM and S-LOC 17 Cat C/D to 1 3/8 SM.

MALSR
A5

MISSED APPROACH:
Climb to 2500 then climbing left turn to 3200 direct HARVS LOM and hold.

AWOS-3PT 123.875	WICHITA APP CON 125.5 306.2	CLNC DEL 126.55	UNICOM 123.0 (CTAF) 0
----------------------------	---------------------------------------	---------------------------	---------------------------------



CATEGORY	A	B	C	D
S-ILS 17	1730-1/2 200 (200-1/2)			
S-LOC 17	1900-1/2 370 (400-1/2)	1900-5/8 370 (400-3/4)	1900-3/4 370 (400-3/4)	
CIRCLING	2000-1 467 (500-1)	2000-1 1/2 467 (500-1 1/2)	2100-2 567 (600-2)	

ELEV 1533 D TDZE 1530

174° 4.8 NM from FAF

Diagram showing the 3200 altitude and 174° bearing from the FAF.

REIL Rwy 8, 26, and 35 0

FAF to MAP 4.4 NM

Knots	60	90	120	150	180
Min:Sec	4:24	2:56	2:12	1:46	1:28