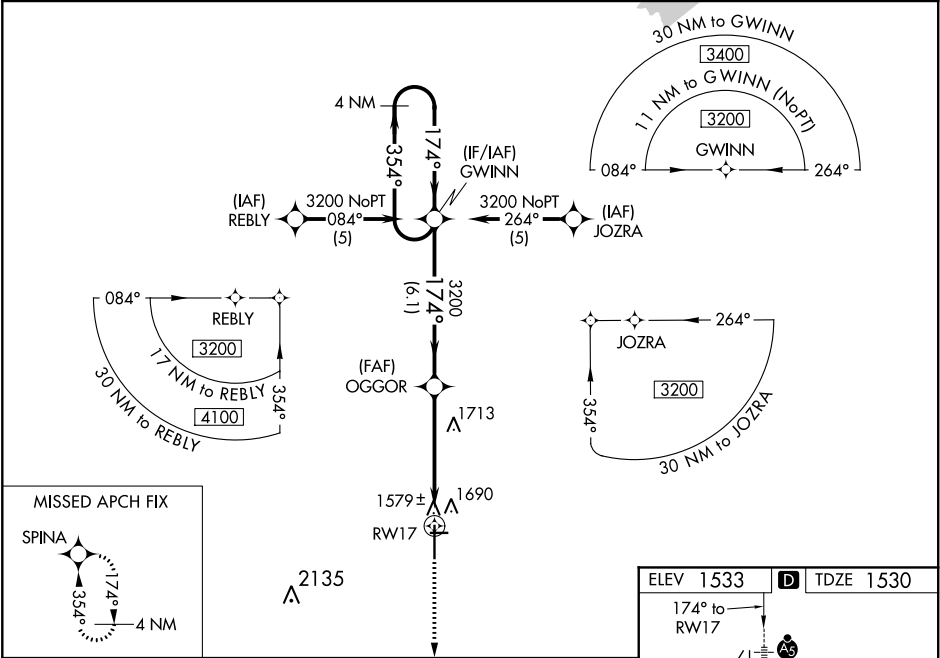


WAAS CH 50109 W17A	APP CRS 174°	Rwy Idg 6705 TDZE 1530 Apt Elev 1533
--	------------------------	---

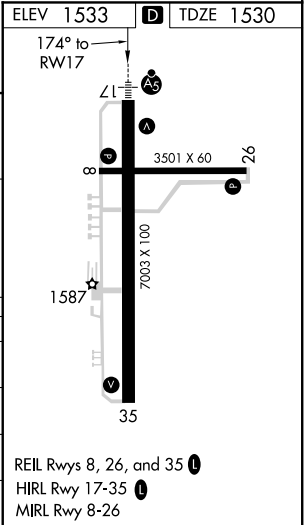
RNAV (GPS) RWY 17
NEWTON-CITY-COUNTY (E WK)

RNP APCH. ⚠ When local altimeter setting not received, use Wichita Dwight D Eisenhower National altimeter setting: increase LPV DA to 1891 feet and visibility 1/2 SM; increase all MDAs 100 feet and visibility Cat C and LNAV Cat D 1/4 SM. VDP NA when using Wichita Dwight D Eisenhower National altimeter setting. For inop ALS, increase LPV visibility to 1/2 SM and LNAV Cat C/D to 1 1/2 SM. For inop ALS when using Wichita Dwight D Eisenhower National altimeter setting, increase LPV visibility to 1 SM. Circling Rwy 8, 26 NA at night.	MALSR 	MISSED APPROACH: Climb to 3600 direct SPINA and hold.
---	-----------	--

AWOS-3PT 123.875	WICHITA APP CON 125.5 306.2	CLNC DEL 126.55	UNICOM 123.0 (CTAF) 0
----------------------------	---------------------------------------	---------------------------	--



4 NM Holding Pattern		GP 3.00° TCH 55	6.1 NM	3.6 NM	1.4 NM
CATEGORY	A	B	C	D	
LPV DA	1791-1/2 261 (300-1/2)				
LNAV/VNAV DA	NA				
LNAV MDA	2020-1/2	490 (500-1/2)	2020-1	490 (500-1)	
CIRCLING	2020-1	487 (500-1)	2020-1 1/2	2100-2	567 (600-2)



NC-2, 31 DEC 2020 to 28 JAN 2021

NC-2, 31 DEC 2020 to 28 JAN 2021