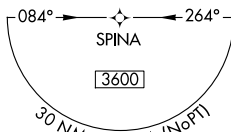
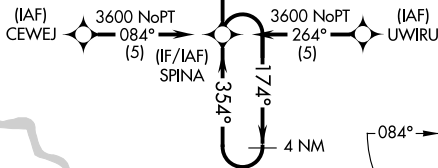
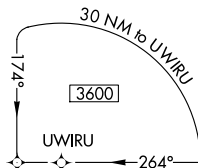
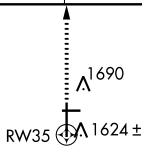
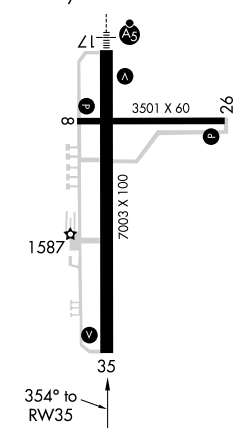


RNAV (GPS) RWY 35
NEWTON-CITY-COUNTY (EWK)

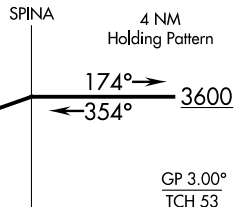
MISSED APPROACH.
Climb to 3200 direct
GWINN and hold.

MISSED APCH FIX

REIL Rwy 8, 26, and 35 **L**
HIRL Rwy 17-35 **L**
MIRL Rwy 8-26



*1 NM to
RW35



	1 NM	4 NM	6 NM	
CATEGORY	A	B	C	D
LPV DA	1778-¾ 250 (300-¾)			
LNAV/ VNAV DA	NA			
LNAV MDA	1880-1 352 (400-1)			1880-1¼ 352 (400-1¼)
CIRCLING	2000-1 467 (500-1)		2000-1½ 467 (500-1½)	2100-2 567 (600-2)

NC-2, 31 DEC 2020 to 28 JAN 2021