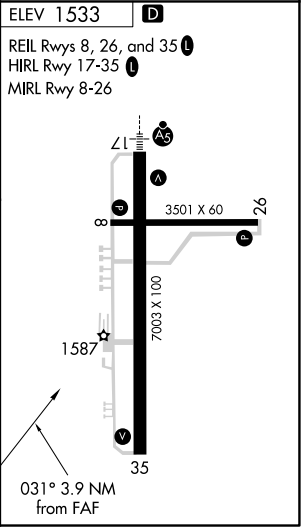
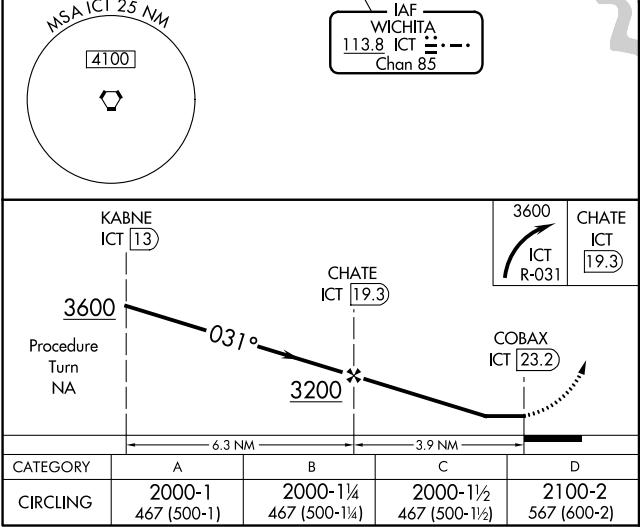
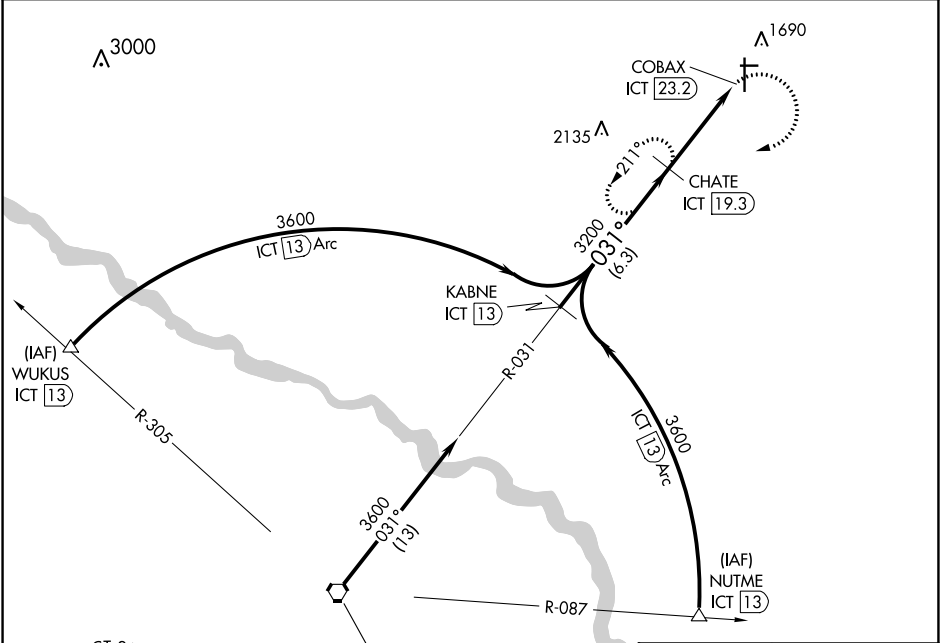


VORTAC ICT	APP CRS	Rwy Idg	N/A
113.8	031°	TDZE	N/A
Chan 85		Apt Elev	1533

VOR/DME-A
NEWTON-CITY-COUNTY (E WK)

⚠ Circling Rwy 8, 26 NA at night. When local altimeter setting not received, use Wichita Dwight D Eisenhower National altimeter setting and increase all MDAs 100.	⚠ MISSED APPROACH: Climbing right turn to 3600 on ICT R-031 to CHATE/ICT 19.3 DME and hold, continue climb-in-hold to 3600.
---	--

AWOS-3PT 123.875	WICHITA APP CON 125.5 306.2	CLNC DEL 126.55	UNICOM 123.0 (CTAF) 0
----------------------------	---------------------------------------	---------------------------	---------------------------------



NC-2, 31 DEC 2020 to 28 JAN 2021

NC-2, 31 DEC 2020 to 28 JAN 2021