


WAAS CH 70417 W17A	APP CRS 173°	Rwy Idg TDZE Apt Elev	6824 2589 2589
--	------------------------	-----------------------------	---

RNAV (GPS) RWY 17

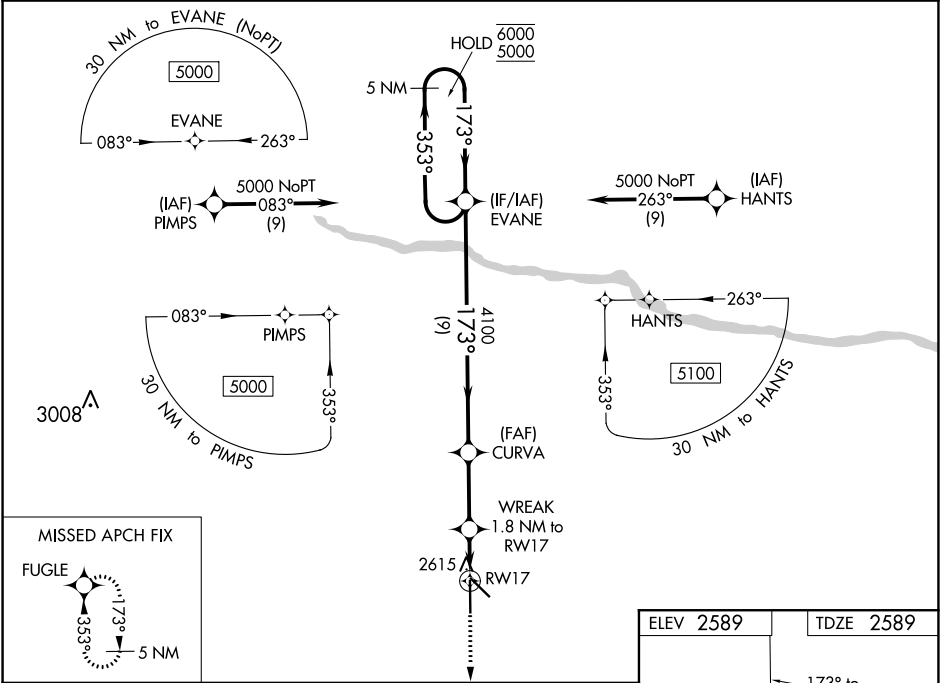
AINSWORTH RGNL (ANW)

RNP APCH.
For uncompensated Baro-VNAV systems, LNAV/VNAV NA below -20°C or above 54°C. For inop ALS, increase LNAV/VNAV all Cats visibility to ¾ SM, and LNAV Cats C/D visibility to ¾ SM.

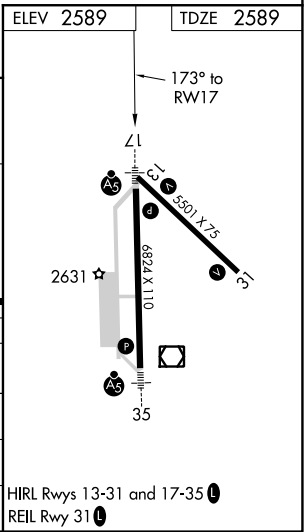
MALSR


MISSED APPROACH: Climb to 5100 direct FUGLE and hold.

AWOS-3 118.325	DENVER CENTER 127.95 338.2	UNICOM 122.8 (CTAF) 
--------------------------	--------------------------------------	---



5 NM Holding Pattern		EVANE	CURVA	WREAK 1.8 NM to RW17	5100 FUGLE
6000 5000		353° 173°	173° 4100	*LNAV only	
GP 3.00° TCH 46			*3220	*0.7 NM to RW17	
		9 NM	2.8 NM	1.1 NM	0.7 NM
CATEGORY	A	B	C	D	
LPV DA	2789-½		200 (200-½)		
LNAV/VNAV DA	2839-½		250 (300-½)		
LNAV MDA	2880-½		291 (300-½)		
CIRCLING	3000-1 411 (500-1)	3040-1 451 (500-1)	3040-1½ 451 (500-1½)	3200-2 611 (700-2)	



NC-2, 31 DEC 2020 to 28 JAN 2021

NC-2, 31 DEC 2020 to 28 JAN 2021