

VOR/DME ANW
112.7
Chan **74**

APP CRS
159°

Rwy Idg
TDZE
Apt Elev
6824
2589
2589

VOR RWY 17
AINSWORTH RGNL (ANW)

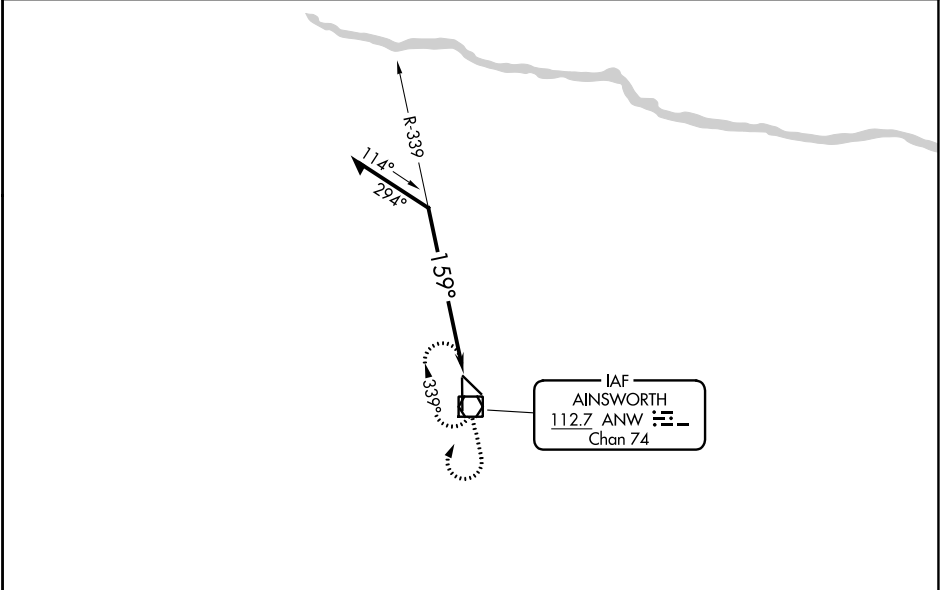
MALSR

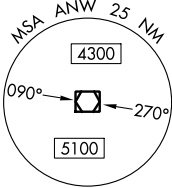

MISSED APPROACH: Climb to 3500 then climbing right turn to 6000 direct ANW VOR/DME and hold.

AWOS-3
118.325

DENVER CENTER
127.95 338.2

UNICOM
122.8 (CTAF) **0**



MSA ANW 25 NM


3098

Remain within 10 NM

339°

ANW 2.4


159°

4300

1.3 NM


3500

6000

ANW 

*ANW VOR/DME

*Maintain 6000 until established outbound on procedure turn.

CATEGORY	A	B	C	D
S-17	3060-1/2	471 (500-1/2)	3060-3/4	3060-1
			471 (500-3/4)	471 (500-1)
 CIRCLING	3060-1	471 (500-1)	3060-1 1/2	3200-2
			471 (500-1 1/2)	611 (700-2)

ELEV 2589

TDZE 2589

159° to VOR/DME

2631

35

339°

5301 X 75

HIRL Rwys 13-31 and 17-35 **0**

REIL Rwy 31 **0**