

NDB OKS

233

APP CRS

112°

Rwy Idg

4699

TDZE

3394

Apt Elev

3394

NDB RWY 12

GARDEN COUNTY/KING RHILEY FIELD (OKS)

▼

▲

NA

Use Ogallala altimeter setting.

MISSED APPROACH: Climb to 5600 then right turn direct OKS NDB and hold.

OGA AWOS-3

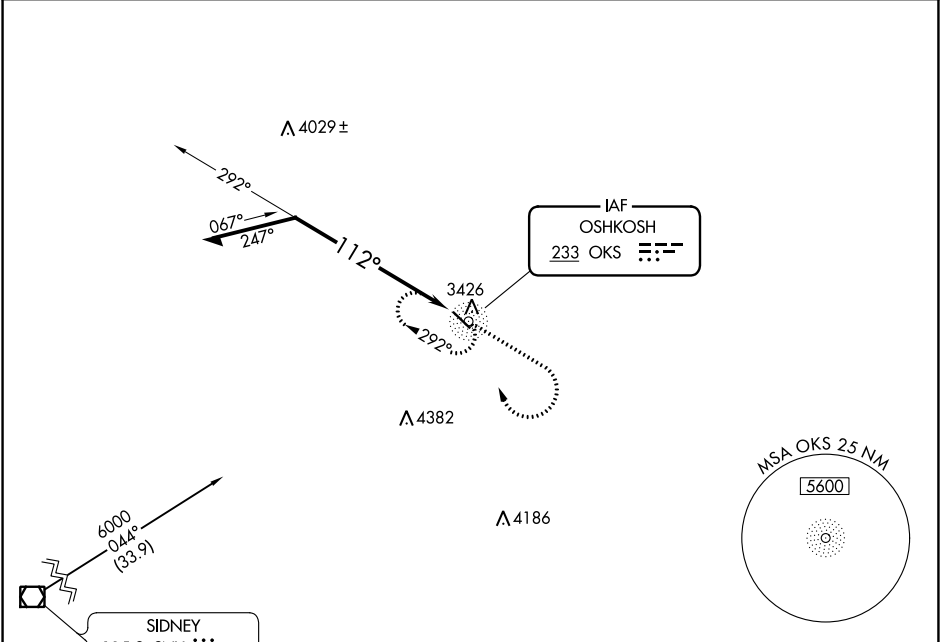
121.275

DENVER CENTER

118.475 225.4

UNICOM

122.8 (CTAF) 0



ELEV 3394

TDZE 3394

112° to NDB

4699 X 60

0.3% UP

REIL Rwy 12 and 30 0

MIRL Rwy 12-30 0

Remain within 10 NM

OKS NDB

5600

292°

112°

5600

OKS

CATEGORY	A	B	C	D
S-12	4600-1¼ 1206 (1300-1¼)	4600-1½ 1206 (1300-1½)	NA	
CIRCLING	4600-1¼ 1206 (1300-1¼)	4600-1½ 1206 (1300-1½)	NA	