

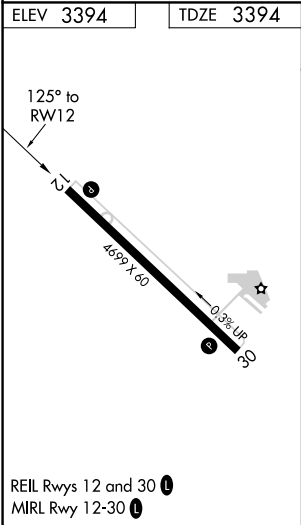
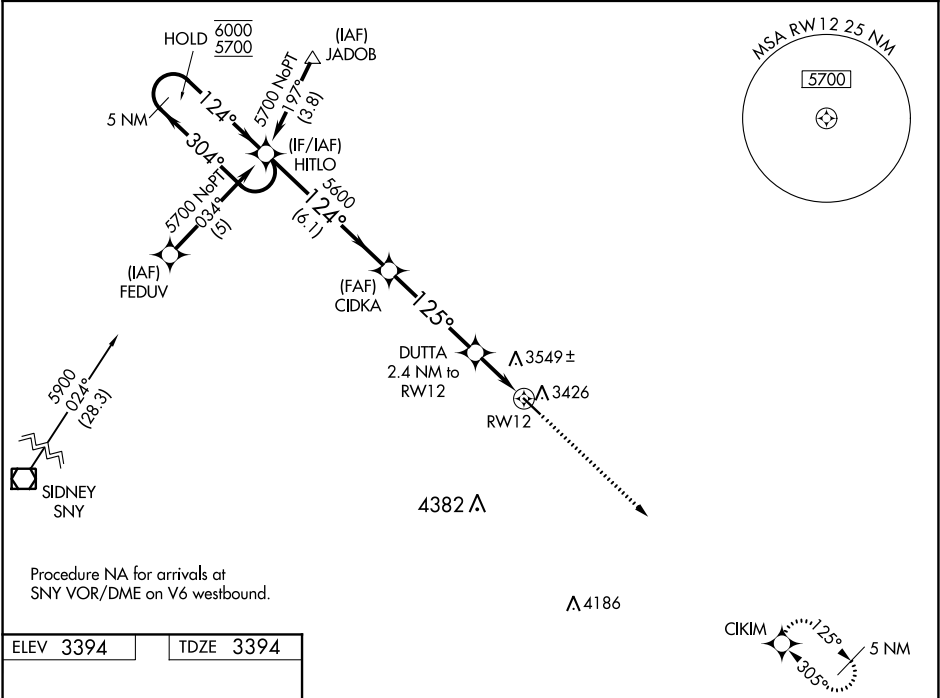
WAAS CH <b>99708</b> <b>W12A</b>	APP CRS <b>125°</b>	Rwy Idg <b>4699</b> TDZE <b>3394</b> Apt Elev <b>3394</b>
--	------------------------	---

RNAV (GPS) RWY 12

GARDEN COUNTY/KING RHILEY FIELD (OKS)

RNP APCH.	MISSED APPROACH: Climb to 5400 direct CIKIM and hold.
<div><div>Baro-VNAV NA. Rwy 12 helicopter visibility reduction below ¾ SM NA. Use Ogallala altimeter setting.</div><div>NA</div></div>	

OGA AWOS-3 <b>121.275</b>	DENVER CENTER <b>118.475 225.4</b>	UNICOM <b>122.8 (CTAF) 0</b>
------------------------------	---------------------------------------	---------------------------------



5 NM Holding Pattern HITLO					5400	CIKIM
6000 ← 304° 5700 ← 124°					* LNAV only	
GP 3.00° TCH 40						
CIDKA 5600 DUTTA 2.4 NM to RWY 12 RWY 12						
6.1 NM      4.3 NM      2.4 NM						
CATEGORY	A	B	C	D		
LPV DA	3762-1¼	368 (400-1¼)	NA			
LNAV/VNAV DA	3882-1¾	488 (500-1¾)	NA			
LNAV MDA	3980-1	586 (600-1)	NA			
CIRCLING	3940-1 546 (600-1)	3980-1 586 (600-1)	NA			