

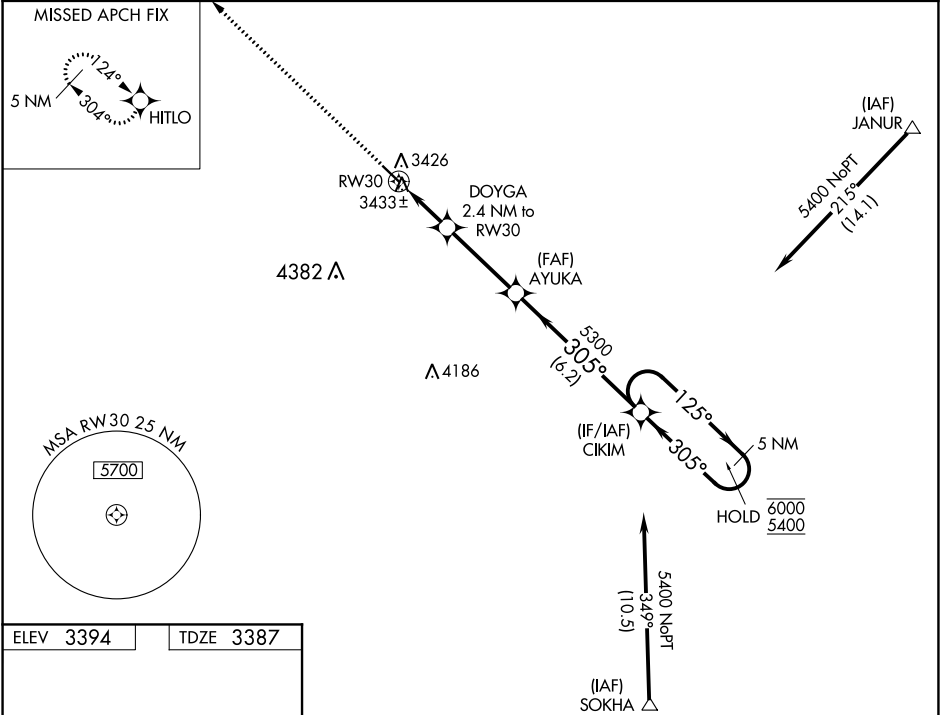
WAAS CH 93509 W30A	APP CRS 305°	Rwy ldg 4699 TDZE 3387 Apt Elev 3394
--	------------------------	---

RNAV (GPS) RWY 30

GARDEN COUNTY/KING RHILEY FIELD (OKS)

RNP APCH.	MISSED APPROACH: Climb to 5700 direct HITLO and hold.
<div><div>▼</div><div>NA</div><div>Rwy 30 helicopter visibility reduction below ¾ SM NA. Baro-VNAV NA. Use Ogallala altimeter setting.</div></div>	

OGA AWOS-3 121.275	DENVER CENTER 118.475 225.4	UNICOM 122.8 (CTAF) 1
------------------------------	---------------------------------------	---------------------------------



ELEV 3394	TDZE 3387	<div><div>5700 HITLO</div><div>DOYGA 2.4 NM to RW30</div><div>AYUKA 5300</div><div>CIKIM 5 NM Holding Pattern</div><div>125° 6000</div><div>305° 5400</div><div>GP 3.00°</div><div>TCH 40</div></div>			
<div></div>		<div><div>*LNAV only.</div><div>RW30</div><div>4180*</div><div>2.4 NM</div><div>3.4 NM</div><div>6.2 NM</div></div>			
CATEGORY		A	B	C	D
LPV DA		3734-1¼	347 (400-1¼)	NA	
LNAV/VNAV DA		3792-1½	405 (400-1½)	NA	
LNAV MDA		3880-1	493 (500-1)	NA	
CIRCLING		3940-1 546 (600-1)	3980-1 586 (600-1)	NA	