

20030

APP CRS 172°	Rwy Idg TDZE Apt Elev	5110 3187 3187
------------------------	-----------------------------	---

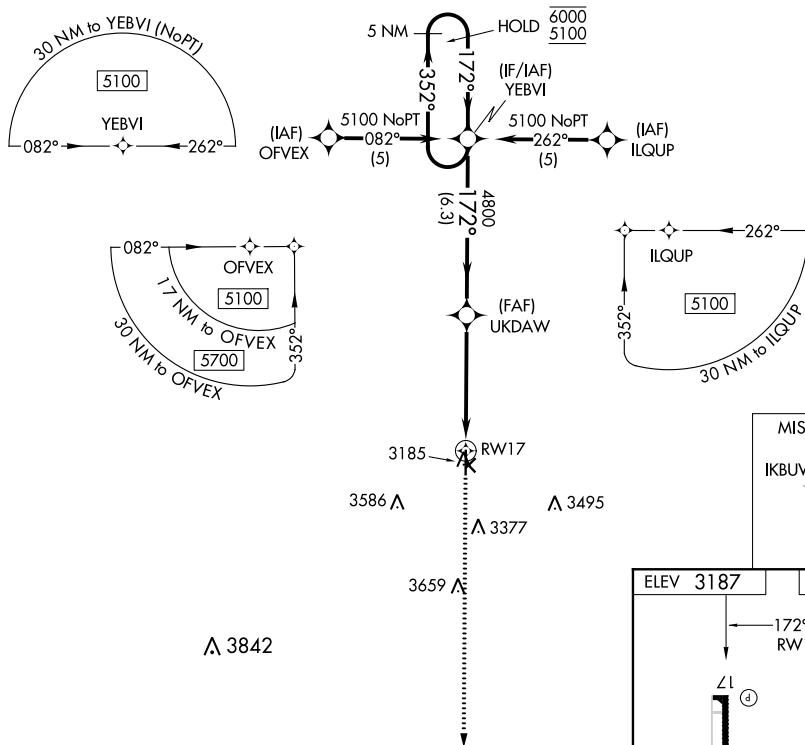
RNAV (GPS) RWY 17

RNP APCH.

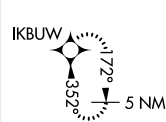
- T** Procedure NA at night.
A Rwy 17 helicopter visibility reduction below 1 SM NA.

MISSED APPROACH: Climb to 5200 direct IKBW and hold.

AWOS-3 118.175	DENVER CENTER 132.7 226.675	UNICOM 122.8 (CTAF) 0
--------------------------	---------------------------------------	---------------------------------



MISSED APCH FIX



VGSI and descent angles not coincident (VGSI Angle 3.00/TCH 23).

5 NM Holding Pattern

YEBV

UKDAW

3.04° TCH 40

RW17

6.3 NM

4.9 NM

5200

IKBWV

CATEGORY	A	B	C	D
LNAV MDA	3620-1	433 (500-1)	3620-1¼ 433 (500-1¼)	NA

COLBY, KANSAS
Amdt 1B 30JAN20

39°26'N-101°03'W

SHALZ FIELD (CBK)
RNAV (GPS) RWY 17

NC-2, 31 DEC 2020 to 28 JAN 2021