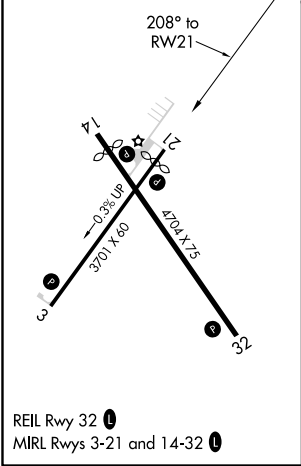
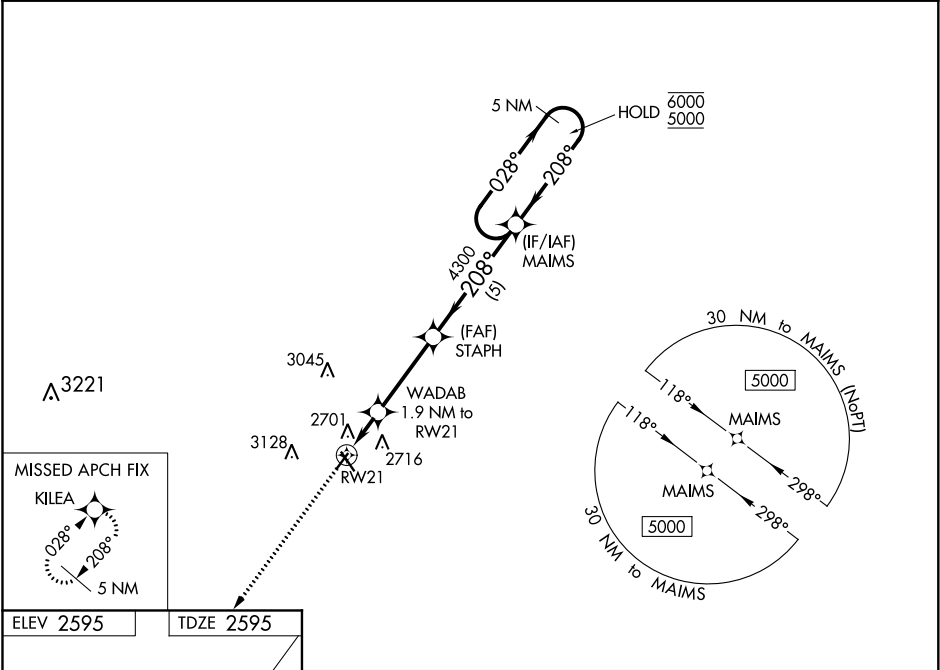


WAAS CH <b>97437</b> <b>W21A</b>	APP CRS <b>208°</b>	Rwy Idg TDZE Apt Elev	<b>3402</b> <b>2595</b> <b>2595</b>
--	------------------------	-----------------------------	---

RNAV (GPS) RWY 21  
MILLER FIELD (VTN)

RNP APCH.	MISSED APPROACH: Climb to 5000 direct KILEA and hold.
For uncompensated Baro-VNAV systems, LNAV/VNAV NA below -24°C or above 54°C.	

ASOS <b>118.075</b>	DENVER CENTER <b>127.95 338.2</b>	UNICOM <b>122.8 (CTAF) 0</b>
------------------------	--------------------------------------	---------------------------------



5000	KILEA	WADAB 1.9 NM to RW21	STAPH 4300	MAIMS	5 NM Holding Pattern
* LNAV only		* 1.2 NM to RW21			028° → 6000 ← 208° 5000
		3220*	4300		GP 3.00° TCH 45
		1.2 NM	0.7	3.3 NM	5 NM
CATEGORY	A	B	C	D	
LPV DA	2845-1	250 (300-1)	NA	NA	
LNAV/VNAV DA	2893-1	298 (300-1)	NA	NA	
LNAV MDA	3020-1	425 (500-1)	NA	NA	
CIRCLING	3080-1 485 (500-1)	3560-1½ 965 (1000-1½)	NA	NA	